



20 Watt RGB Round



40 Watt RGB Rectangular



40 Watt RGB Round



100W RGB Silver Finish Yoke Mount



100W RGB Black Finish Yoke Mount

Introducing the Phantom Series Flood Lights

TPR is pleased to announce the release of the Phantom Series of high power LED flood lights. These extremely powerful fixtures are available in a range of lumen packages and various beam angles.

- 20 Watt to 500 Watt Power Options
- 90-305VAC Auto Switching
- IP65 Rated for Outdoor use
- High Power Cree Chips
- Black or Silver finish
- RGB, RGBW and Static White
- DMX 512 Control Protocol
- Available in 10, 20 and 45 degree*
- Yoke Mount or Pedestal Base (20W and 40W is Pedestal only, 150W RGBW, 250 RGBW and 500W RGB is Yoke only)



500W RGB Black Finish



500W RGB Silver Finish



250W RGBW



150W RGB Black Finish Pedestal Base

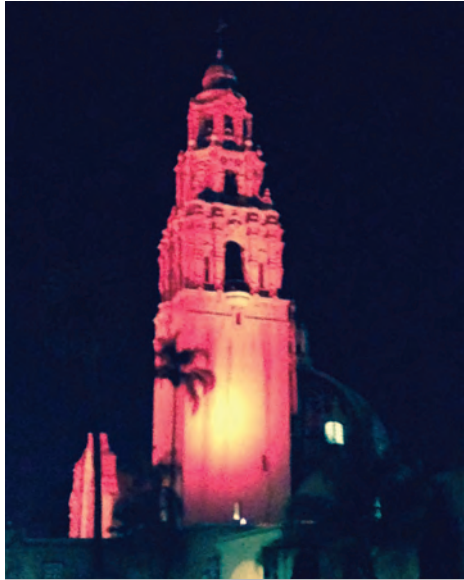


150W RGBW Silver Finish Yoke Mount



150W RGB Silver Finish Yoke Mount

Balboa Park, San Diego, CA



When the City of San Diego needed a full lighting package for the up and coming Festival of Lights they called on TPR's Phantom 200W floods. Only 64 fixtures were needed to light many of the prominent structures throughout the park, including the 198' tall California Tower.

REPRESENTATIVE: Del Sol Resources

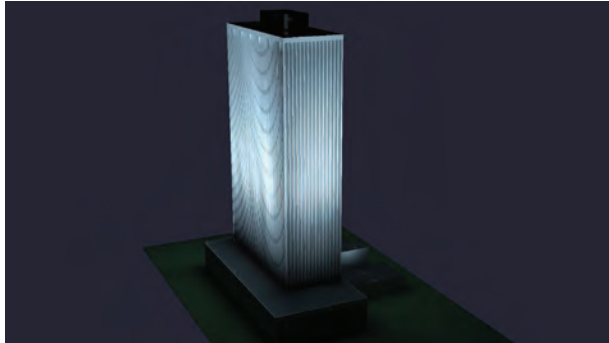
DISTRIBUTOR: Graybar San Diego

INSTALLATION: City of San Diego
Facilities Maintenance



Special thanks go out to our friends with the City of San Diego!

First Financial Center, Des Moines, IA



Completed in December 2015 the First Financial Center uses 72 of the Phantom 200W RGB 20 degree floods to create a multitude of color changing schemes. It began as an AGI32 model and was brought to fruition by the teamwork of several parties. The floods produce an incredible 1.8fc at the top of the 27 story building. The system is controlled by the STICK1 programmable controller.

ENGINEER: KCL Engineering,
Des Moines, IA

INSTALLATION: Randall Electric,
Iowa City, IA



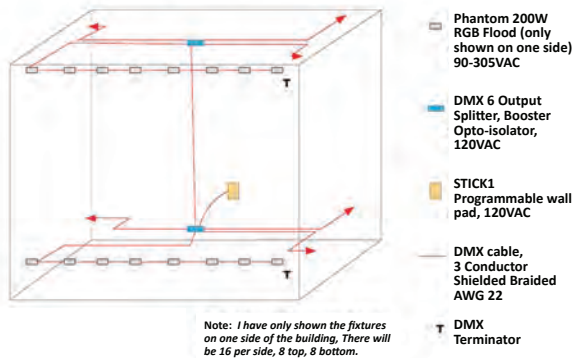
1000 National Plaza, Schaumburg, IL



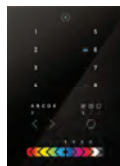
From artist's conception to the final lighting package TPR provided the technical knowledge and experience to help make this project a reality. This system uses 72 x 200W Phantom RGB fixtures to fully light the structure. As always with larger jobs we did a custom wiring diagram to facilitate an easy installation. With the STICK1 programmable wall pad we were able to create a multitude of color changing shows and static scenes.

3-D Layout for DMX

1000 National Plaza, RGB Flood Lighting DMX Wiring Layout

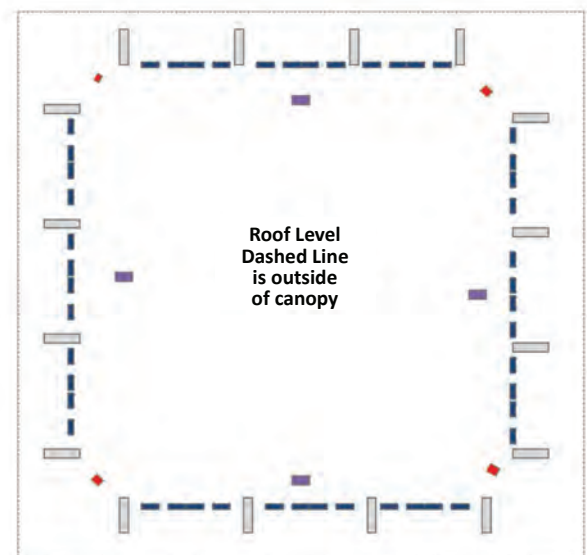


Phantom 200W Yoke Mount



STICK KE2 DMX Wall Pad

Roof Top Layout



◆ 40W PHRGB 45 Degree Beam Spread, 1332lm

Each "Bay" between the gray columns will be addressed independently as will each 40W Phantom at the corners for effects.

— 4' SHDW RGB (4 per Bay) 45 Degree Beam Spread 4961lm/ft

■ Westpower 300 Data box and Power Supply

Controls and Accessories



UX8 DMX Wall Pad. Comes with pre-programmed effects or you can set the color with the touch screen Color Dial. It uses 3 Channels of DMX.

PART NUMBER: TPR-UX8-DMX



STICK2 DMX Wall Pad. This unit is programmable via the Easy Stand Alone or ESA2 software. It is capable of 128 Channels of DMX.

PART NUMBER: TPR-STICK2-DMX



STICK KE2 DMX Wall Pad. Also programmable via Easy Stand Alone, ESA2 or ESA Pro software. This unit can control up to 2 DMX Universes (1028 Channels). It also has a Clock and Calendar Feature for hands free queuing, and can be hooked to a Local Area Network (LAN). You can also hook it to a wifi router and control it from a Smart Phone or I-pad.

PART NUMBER: TPR-STICK-KE2-DMX



Matrix Software. This is the most powerful control in our product range. All you need is a laptop to control up to 512 Universes of DMX. It allows running Art Net to DMX for multiple Universes down a single line.

PART NUMBER: TPR-STICK2-DMX



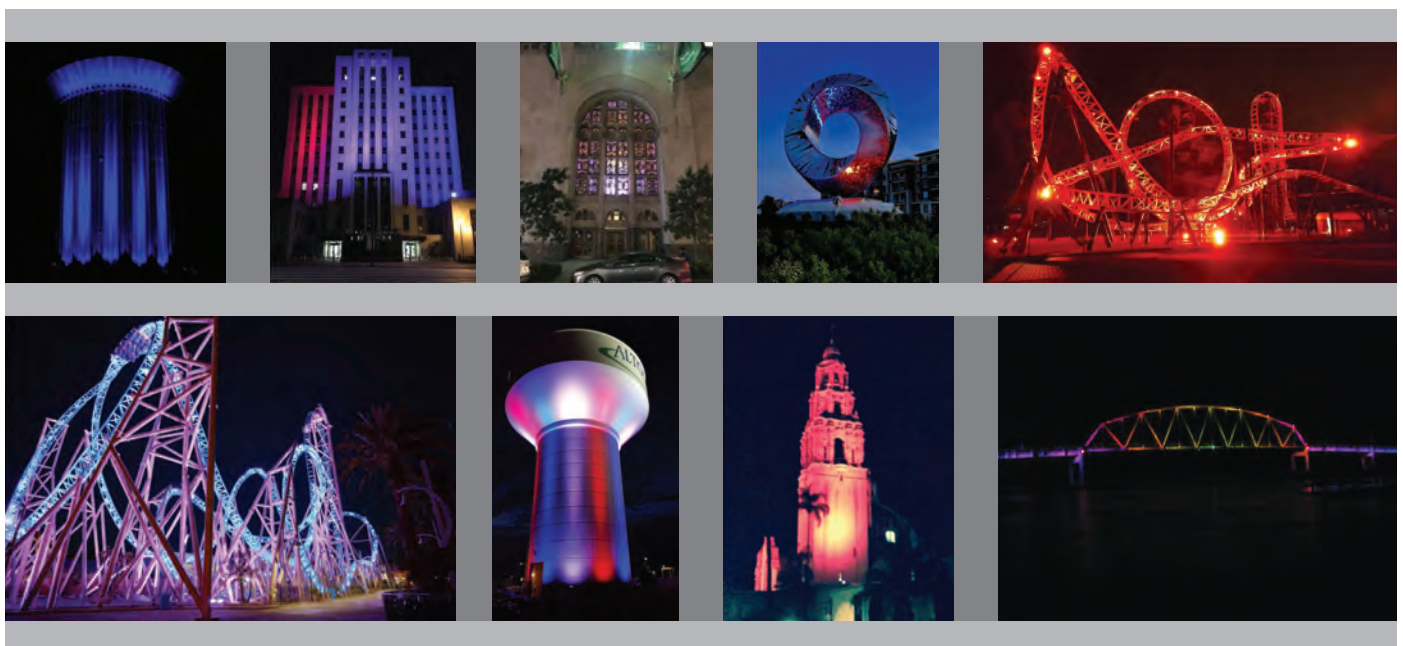
Wireless DMX Transceiver. This outdoor rated unit can be set as either a Transmitter or a Receiver to broadcast a single Universe of DMX. It has an inherent range of 900' or you can add the high gain antenna for longer distances.

PART NUMBER: TPR-WDMX-TCVR



DMX Splitter Booster. This unit takes in one Universe of DMX and branches it up to 6 outputs. It is the required device for safely splitting DMX signal.

PART NUMBER: TPR-6.3-SPL-DMX



Phantom Series Ordering Codes

FIXTURE	MODEL	BEAM ANGLE	MOUNTING	FINISH	
	20W RGB Round 20W White Light	TPR-PHRGB-20 TPR-PHW-20	10/20/45	PM (Pedestal Only)	W (White Only)
	40W RGB Round 40W White Light	TPR-PHRGB-40RO TPR-PHW-40RO	10/20/45	PM (Pedestal Only)	W (White Only)
	40W RGB Rectangular 40W White Light	TPR-PHRGB-40RT TPR-PHW-40RT	10/20/45	PM (Pedestal Only)	B/S (Black or Silver)
	100W RGB 100W White Light	TPR-PHRGB-100 TPR-PHW-100	10/20/45	YM/PM (Yoke or Pedestal)	B/S (Black or Silver)
	150W RGB 150W White Light	TPR-PHRGB-150 TPR-PHW-150	10/20/45	YM/PM (Yoke or Pedestal)	B/S (Black or Silver)
	150W RGBW	TPR-PHRGBW-150	15/30/40/15X30	YM/PM (Yoke or Pedestal)	B/S (Black or Silver)
	250W RGBW	TPR-PHRGBW-250	15/30/40/15X30	PM (Pedestal Only)	S (Silver Only)
	500W RGBW	TPR-PHRGBW-500	10/20/45	PM (Pedestal Only)	S (Silver Only)

