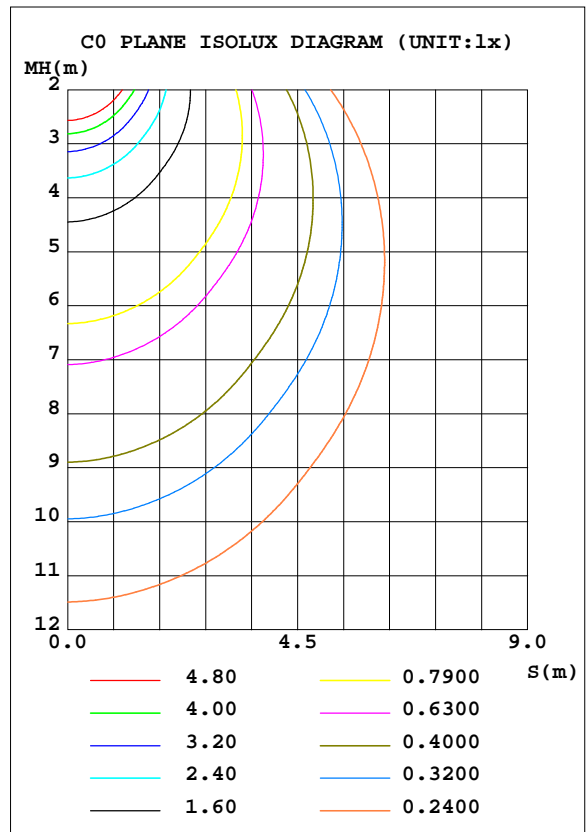
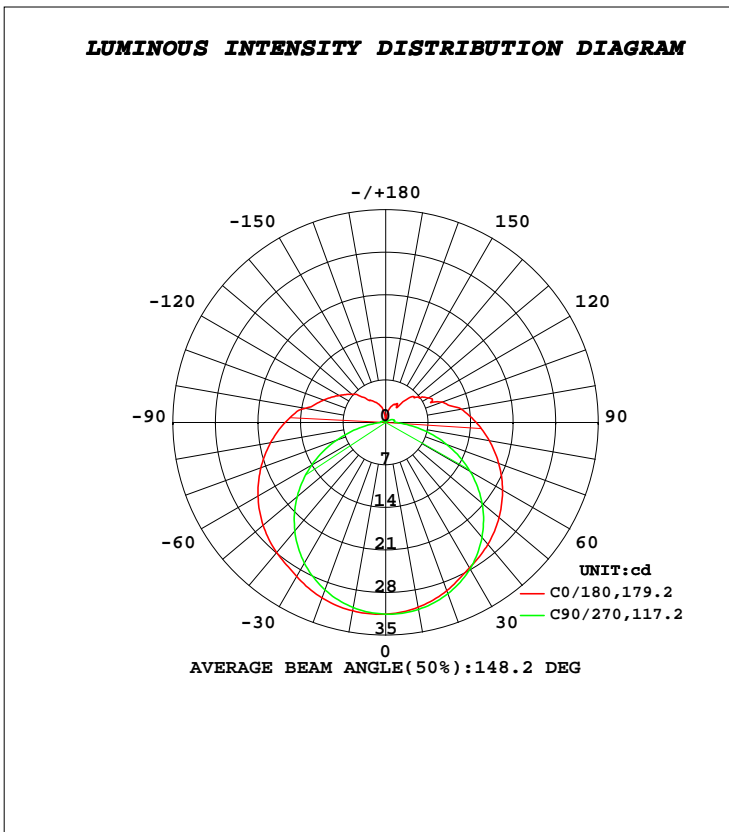


**LUMINAIRE PHOTOMETRIC TEST REPORT**

Test:U:24.010V I:0.4709A P:11.306W PF:1.0000 Freq:49.99Hz Lamp Flux:155.361x1 lm		
NAME: TPR-FL-ENCORE-RGB-R	TYPE:LED LIGHT	WEIGHT:0.5
SPEC.:	DIM.:	SERIAL No.:
MFR.: EVERFINE	SUR.:1.0*0.015	Shielding Angle:

DATA OF LAMP		PHOTOMETRIC DATA			
MODEL	LED LIGHT	Imax(cd)	31.61	S/MH(C0/180)	1.40
NOMINAL POWER(W)		LOR(%)	100.0	S/MH(C90/270)	1.26
RATED VOLTAGE(V)	24	TOTAL FLUX(lm)	155.36	η UP, DN(C0-180)	10.4,40.4
NOMINAL FLUX(lm)	155.361	CIE CLASS	SEMI-D.	η UP, DN(C180-360)	9.9,39.4
LAMPS INSIDE	1	η up(%)	20.3	CIBSE SHR NOM	1.50
TEST VOLTAGE(V)	24	η down(%)	79.7	CIBSE SHR MAX	1.55



**C Range: 0 - 360DEG**  
**C Interval: 45.0DEG**  
**Test Speed: HIGH**  
**Temperature:25.3DEG**  
**Operators:ANDY**  
**Test Date:2021-04-26**

**γ Range: 0 - 180DEG**  
**γ Interval: 1.0DEG**  
**Test System:EVERFINE GO-2000A\_V1 SYSTEM V2.0.400**  
**Humidity:65.0%**  
**Test Distance:4.550m [K=1.0000]**  
**Remarks:**

**ZONAL FLUX DIAGRAM**

**ZONAL FLUX DIAGRAM:**

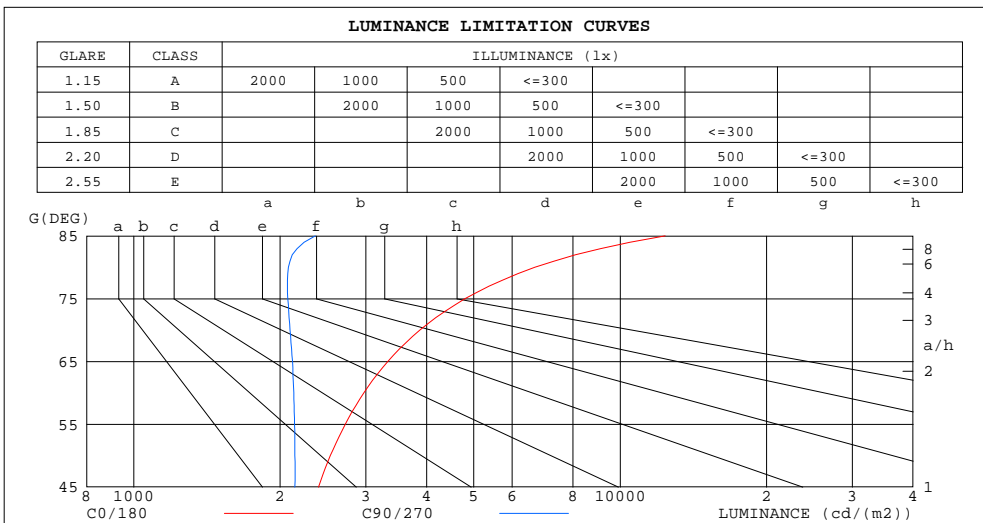
$\gamma$	C0	C45	C90	C135	C180	C225	C270	C315	$\gamma$	$\Phi$ zone	$\Phi$ total	%lum,lamp
10	30.86	31.02	31.23	31.48	31.47	31.23	30.91	30.72	0- 10	2.990	2.990	1.92,1.92
20	29.45	29.67	29.99	30.68	30.72	30.10	29.30	29.09	10- 20	8.645	11.64	7.49,7.49
30	27.63	27.50	27.80	29.05	29.27	28.12	26.74	26.69	20- 30	13.36	24.99	16.1,16.1
40	26.19	24.86	24.67	26.68	27.94	25.41	23.29	24.11	30- 40	16.71	41.70	26.8,26.8
50	24.37	22.27	20.72	24.14	26.34	22.65	19.03	21.46	40- 50	18.59	60.28	38.8,38.8
60	22.21	19.34	16.03	21.40	24.27	19.66	14.08	18.49	50- 60	18.87	79.16	50.9,50.9
70	19.81	16.26	10.78	18.41	21.85	16.51	8.672	15.47	60- 70	17.57	96.72	62.3,62.3
80	17.33	13.34	5.423	15.40	19.24	13.50	3.466	12.67	70- 80	15.06	111.8	71.9,71.9
90	14.92	10.85	1.676	12.66	16.56	10.89	0.8770	10.36	80- 90	12.10	123.9	79.7,79.7
100	12.69	8.443	1.492	9.559	13.49	7.817	0.7740	7.414	90-100	9.721	133.6	86,86
110	9.919	5.569	1.362	6.317	10.87	5.196	0.6505	5.208	100-110	6.974	140.6	90.5,90.5
120	8.124	4.692	1.034	6.127	8.917	5.344	0.2445	4.480	110-120	5.087	145.7	93.8,93.8
130	6.527	4.201	0.2584	5.210	7.259	4.160	0.2574	3.425	120-130	3.971	149.6	96.3,96.3
140	4.494	2.763	0.2654	4.038	5.227	3.563	0.2654	2.487	130-140	2.642	152.3	98,98
150	3.578	2.320	0.2694	3.444	4.061	3.065	0.2754	2.111	140-150	1.615	153.9	99.1,99.1
160	2.884	1.555	0.2833	2.778	3.116	2.483	0.2903	1.345	150-160	0.9912	154.9	99.7,99.7
170	1.147	0.9687	0.2973	1.729	1.822	1.115	0.3013	0.4237	160-170	0.4292	155.3	100,100
180	0.2828	0.2985	0.2973	0.3148	0.2778	0.2995	0.3013	0.3208	170-180	0.0490	155.4	100,100
DEG	LUMINOUS INTENSITY:cd									UNIT:lm		

**C Range: 0 - 360DEG**  
**C Interval: 45.0DEG**  
**Test Speed: HIGH**  
**Temperature:25.3DEG**  
**Operators:ANDY**  
**Test Date:2021-04-26**

**$\gamma$  Range: 0 - 180DEG**  
 **$\gamma$  Interval: 1.0DEG**  
**Test System:EVERFINE GO-2000A\_V1 SYSTEM V2.0.400**  
**Humidity:65.0%**  
**Test Distance:4.550m [K=1.0000]**  
**Remarks:**

**LUMINANCE LIMITATION CURVES**

Test:U:24.010V I:0.4709A P:11.306W PF:1.0000 Freq:49.99Hz Lamp Flux:155.361x1 lm		
NAME: TPR-FL-ENCORE-RGB-R	TYPE:LED LIGHT	WEIGHT:0.5
SPEC.:	DIM.:	SERIAL No.:
MFR.: EVERFINE	SUR.:1.0*0.015	Shielding Angle:



LUMINANCE cd/(m2)		
G (DEG)	C0/180	C90/270
85	12366	2363
80	6679	2079
75	4803	2074
70	3877	2097
65	3330	2120
60	2972	2133
55	2721	2141
50	2538	2145
45	2397	2145

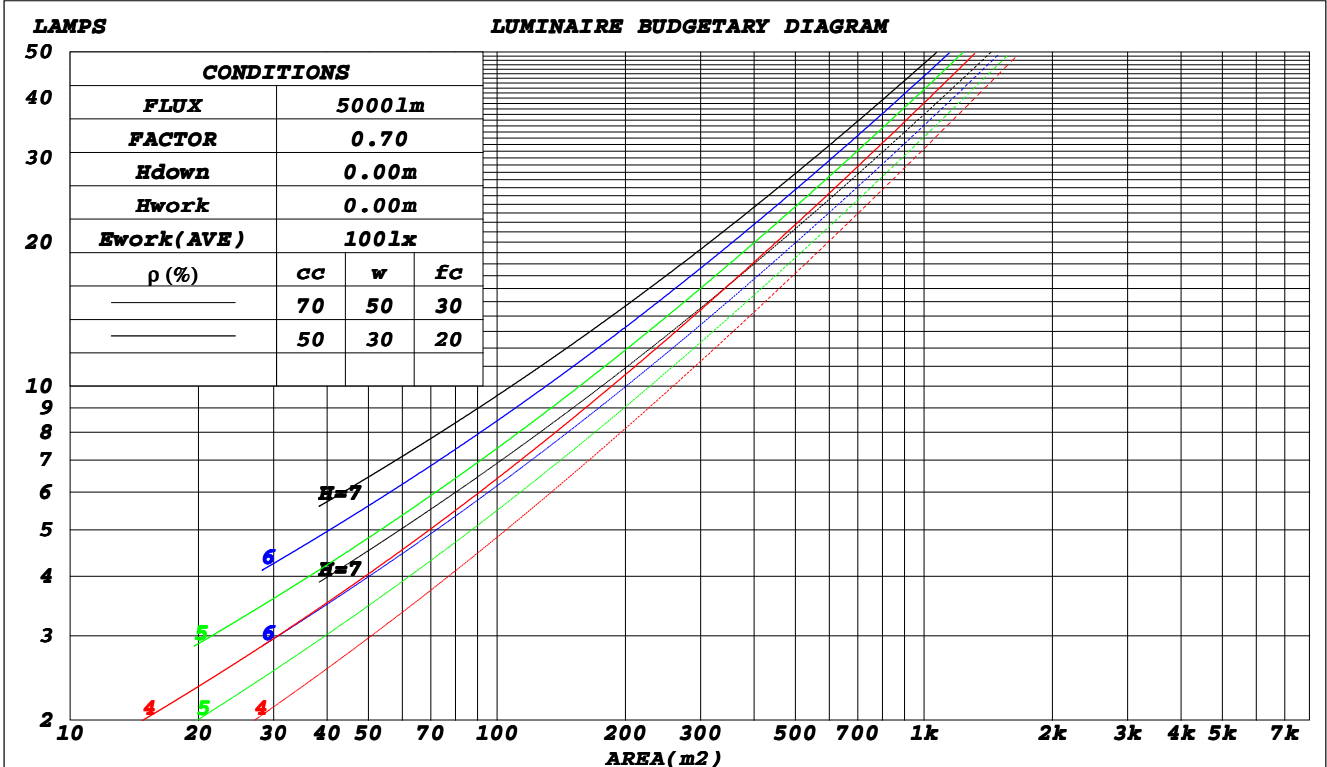
**C Range: 0 - 360DEG**  
**C Interval: 45.0DEG**  
**Test Speed: HIGH**  
**Temperature: 25.3DEG**  
**Operators: ANDY**  
**Test Date: 2021-04-26**

**γ Range: 0 - 180DEG**  
**γ Interval: 1.0DEG**  
**Test System: EVERFINE GO-2000A\_V1 SYSTEM V2.0.400**  
**Humidity: 65.0%**  
**Test Distance: 4.550m [K=1.0000]**  
**Remarks:**

CU AND LUMINAIRE BUDGETARY ESTIMATE DIAGRAM

Test:U:24.010V I:0.4709A P:11.306W PF:1.0000 Freq:49.99Hz Lamp Flux:155.361x1 lm		
NAME: TPR-FL-ENCORE-RGB-R	TYPE:LED LIGHT	WEIGHT:0.5
SPEC.:	DIM.:	SERIAL No.:
MFR.: EVERFINE	SUR.:1.0*0.015	Shielding Angle:

$\rho_{cc}$	80%			70%			50%			30%			10%			0
$\rho_w$	50%	30%	10%	50%	30%	10%	50%	30%	10%	50%	30%	10%	50%	30%	10%	0
$\rho_{fc}$	20%			20%			20%			20%			20%			0
<b>RCR</b>	<b>RCR:Room Cavity Ratio</b>						<b>Coefficients of Utilization(CU)</b>									
0.0	1.14	1.14	1.14	1.09	1.09	1.09	.00	.00	.00	.91	.91	.91	.83	.83	.83	.80
1.0	.95	.89	.84	.91	.86	.81	.82	.78	.75	.75	.72	.69	.68	.66	.63	.60
2.0	.81	.73	.66	.77	.70	.64	.70	.64	.59	.64	.59	.55	.58	.54	.51	.47
3.0	.70	.61	.54	.67	.59	.52	.61	.54	.48	.55	.50	.45	.50	.46	.42	.39
4.0	.61	.52	.45	.59	.50	.43	.54	.46	.40	.49	.43	.38	.44	.39	.35	.32
5.0	.54	.45	.38	.52	.43	.37	.48	.40	.34	.43	.37	.32	.40	.34	.30	.27
6.0	.49	.39	.33	.47	.38	.32	.43	.35	.30	.39	.33	.28	.36	.30	.26	.24
7.0	.44	.35	.28	.42	.34	.28	.39	.31	.26	.36	.29	.24	.33	.27	.23	.21
8.0	.40	.31	.25	.38	.30	.24	.35	.28	.23	.32	.26	.22	.30	.24	.20	.18
9.0	.36	.28	.22	.35	.27	.22	.32	.25	.21	.30	.24	.19	.27	.22	.18	.16
10.0	.33	.25	.20	.32	.25	.20	.30	.23	.19	.28	.22	.18	.25	.20	.17	.15



C Range: 0 - 360DEG  
 C Interval: 45.0DEG  
 Test Speed: HIGH  
 Temperature: 25.3DEG  
 Operators: ANDY  
 Test Date: 2021-04-26

$\gamma$  Range: 0 - 180DEG  
 $\gamma$  Interval: 1.0DEG  
 Test System: EVERFINE GO-2000A\_V1 SYSTEM V2.0.400  
 Humidity: 65.0%  
 Test Distance: 4.550m [K=1.0000]  
 Remarks:

**WEC AND CCEC**

Test:U:24.010V I:0.4709A P:11.306W PF:1.0000 Freq:49.99Hz Lamp Flux:155.361x1 lm		
NAME: TPR-FL-ENCORE-RGB-R	TYPE:LED LIGHT	WEIGHT:0.5
SPEC.:	DIM.:	SERIAL No.:
MFR.: EVERFINE	SUR.:1.0*0.015	Shielding Angle:

$\rho_{cc}$	80%			70%			50%			30%			10%			0
$\rho_w$	50%	30%	10%	50%	30%	10%	50%	30%	10%	50%	30%	10%	50%	30%	10%	0
$\rho_{fc}$	20%			20%			20%			20%			20%			0
<b>RCR</b>	<b>RCR:Room Cavity Ratio</b>						<b>Wall Exitance Coefficients(WEC)</b>									
0.0																
1.0	.390	.222	.070	.377	.215	.068	.352	.202	.064	.329	.190	.061	.307	.178	.057	
2.0	.336	.184	.057	.324	.179	.055	.301	.168	.052	.281	.157	.049	.261	.148	.047	
3.0	.298	.159	.048	.287	.154	.046	.266	.144	.044	.247	.136	.042	.230	.127	.039	
4.0	.268	.139	.041	.258	.135	.040	.239	.127	.038	.222	.119	.036	.206	.112	.034	
5.0	.243	.124	.036	.234	.120	.035	.217	.113	.033	.201	.106	.032	.186	.100	.030	
6.0	.223	.112	.032	.214	.108	.031	.199	.102	.030	.184	.096	.028	.171	.090	.027	
7.0	.205	.101	.029	.198	.098	.028	.183	.093	.027	.170	.087	.025	.158	.082	.024	
8.0	.190	.093	.026	.183	.090	.025	.170	.085	.024	.158	.080	.023	.146	.075	.022	
9.0	.177	.086	.024	.171	.083	.023	.159	.078	.022	.147	.074	.021	.137	.069	.020	
10.0	.166	.079	.022	.160	.077	.022	.149	.073	.021	.138	.069	.019	.128	.064	.018	

$\rho_{cc}$	80%			70%			50%			30%			10%			0
$\rho_w$	50%	30%	10%	50%	30%	10%	50%	30%	10%	50%	30%	10%	50%	30%	10%	0
$\rho_{fc}$	20%			20%			20%			20%			20%			0
<b>RCR</b>	<b>RCR:Room Cavity Ratio</b>						<b>Ceiling Cavity Exitance Coefficients(CCEC)</b>									
0.0	.345	.345	.345	.295	.295	.295	.201	.201	.201	.116	.116	.116	.037	.037	.037	
1.0	.342	.311	.284	.292	.267	.244	.200	.184	.169	.115	.106	.098	.037	.034	.032	
2.0	.335	.288	.249	.287	.248	.216	.197	.172	.150	.113	.100	.088	.036	.032	.029	
3.0	.327	.272	.228	.281	.235	.198	.193	.163	.139	.111	.095	.082	.036	.031	.027	
4.0	.320	.260	.214	.274	.224	.186	.189	.156	.131	.109	.092	.077	.035	.030	.025	
5.0	.312	.250	.204	.268	.216	.178	.185	.151	.125	.107	.089	.074	.034	.029	.025	
6.0	.305	.242	.197	.262	.210	.172	.181	.147	.121	.105	.086	.072	.034	.028	.024	
7.0	.297	.235	.192	.256	.204	.167	.177	.143	.119	.103	.084	.071	.033	.028	.023	
8.0	.291	.230	.188	.250	.199	.164	.173	.140	.116	.101	.083	.069	.033	.027	.023	
9.0	.284	.225	.185	.245	.195	.161	.170	.137	.115	.099	.081	.068	.032	.027	.023	
10.0	.279	.221	.183	.240	.192	.159	.167	.135	.113	.097	.080	.068	.032	.026	.022	

C Range: 0 - 360DEG  
 C Interval: 45.0DEG  
 Test Speed: HIGH  
 Temperature:25.3DEG  
 Operators:ANDY  
 Test Date:2021-04-26

$\gamma$  Range: 0 - 180DEG  
 $\gamma$  Interval: 1.0DEG  
 Test System:EVERFINE GO-2000A\_V1 SYSTEM V2.0.400  
 Humidity:65.0%  
 Test Distance:4.550m [K=1.0000]  
 Remarks:

**UGR(Unified Glare Rating) Table**

Test:U:24.010V I:0.4709A P:11.306W PF:1.0000 Freq:49.99Hz Lamp Flux:155.361x1 lm		
NAME: TPR-FL-ENCORE-RGB-R	TYPE:LED LIGHT	WEIGHT:0.5
SPEC.:	DIM.:	SERIAL No.:
MFR.: EVERFINE	SUR.:1.0*0.015	Shielding Angle:

<b>ceiling/cavity</b>	<b>0.7</b>	<b>0.7</b>	<b>0.5</b>	<b>0.5</b>	<b>0.3</b>	<b>0.7</b>	<b>0.7</b>	<b>0.5</b>	<b>0.5</b>	<b>0.3</b>
<b>walls</b>	<b>0.5</b>	<b>0.3</b>	<b>0.5</b>	<b>0.3</b>	<b>0.3</b>	<b>0.5</b>	<b>0.3</b>	<b>0.5</b>	<b>0.3</b>	<b>0.3</b>
<b>working plane</b>	<b>0.2</b>	<b>0.2</b>	<b>0.2</b>	<b>0.2</b>	<b>0.2</b>	<b>0.2</b>	<b>0.2</b>	<b>0.2</b>	<b>0.2</b>	<b>0.2</b>
<b>Room dimensions</b>	<b>Viewed crosswise</b>					<b>Viewed endwise</b>				
<b>x = 2H y = 2H</b>	<b>21.7</b>	<b>23.1</b>	<b>22.3</b>	<b>23.6</b>	<b>24.2</b>	<b>20.6</b>	<b>21.9</b>	<b>21.1</b>	<b>22.5</b>	<b>23.1</b>
<b>3H</b>	<b>24.4</b>	<b>25.7</b>	<b>25.0</b>	<b>26.3</b>	<b>26.9</b>	<b>22.4</b>	<b>23.7</b>	<b>23.0</b>	<b>24.2</b>	<b>24.9</b>
<b>4H</b>	<b>26.0</b>	<b>27.2</b>	<b>26.6</b>	<b>27.7</b>	<b>28.4</b>	<b>23.2</b>	<b>24.4</b>	<b>23.8</b>	<b>25.0</b>	<b>25.7</b>
<b>6H</b>	<b>27.7</b>	<b>28.8</b>	<b>28.3</b>	<b>29.4</b>	<b>30.1</b>	<b>23.9</b>	<b>25.0</b>	<b>24.5</b>	<b>25.6</b>	<b>26.3</b>
<b>8H</b>	<b>28.6</b>	<b>29.7</b>	<b>29.2</b>	<b>30.3</b>	<b>31.0</b>	<b>24.2</b>	<b>25.2</b>	<b>24.8</b>	<b>25.9</b>	<b>26.6</b>
<b>12H</b>	<b>29.7</b>	<b>30.7</b>	<b>30.3</b>	<b>31.4</b>	<b>32.1</b>	<b>24.4</b>	<b>25.4</b>	<b>25.0</b>	<b>26.0</b>	<b>26.8</b>
<b>4H 2H</b>	<b>22.4</b>	<b>23.6</b>	<b>23.0</b>	<b>24.2</b>	<b>24.8</b>	<b>21.6</b>	<b>22.7</b>	<b>22.1</b>	<b>23.3</b>	<b>24.0</b>
<b>3H</b>	<b>25.3</b>	<b>26.3</b>	<b>25.9</b>	<b>27.0</b>	<b>27.7</b>	<b>23.7</b>	<b>24.7</b>	<b>24.3</b>	<b>25.3</b>	<b>26.0</b>
<b>4H</b>	<b>27.0</b>	<b>27.9</b>	<b>27.6</b>	<b>28.6</b>	<b>29.3</b>	<b>24.7</b>	<b>25.6</b>	<b>25.3</b>	<b>26.3</b>	<b>27.0</b>
<b>6H</b>	<b>28.9</b>	<b>29.7</b>	<b>29.5</b>	<b>30.4</b>	<b>31.2</b>	<b>25.6</b>	<b>26.4</b>	<b>26.2</b>	<b>27.1</b>	<b>27.9</b>
<b>8H</b>	<b>29.9</b>	<b>30.7</b>	<b>30.6</b>	<b>31.4</b>	<b>32.2</b>	<b>25.9</b>	<b>26.7</b>	<b>26.6</b>	<b>27.4</b>	<b>28.2</b>
<b>12H</b>	<b>31.2</b>	<b>31.9</b>	<b>31.9</b>	<b>32.6</b>	<b>33.4</b>	<b>26.3</b>	<b>27.0</b>	<b>27.0</b>	<b>27.7</b>	<b>28.5</b>
<b>8H 4H</b>	<b>27.4</b>	<b>28.2</b>	<b>28.1</b>	<b>28.9</b>	<b>29.7</b>	<b>25.6</b>	<b>26.4</b>	<b>26.2</b>	<b>27.0</b>	<b>27.8</b>
<b>6H</b>	<b>29.6</b>	<b>30.2</b>	<b>30.3</b>	<b>31.0</b>	<b>31.8</b>	<b>26.8</b>	<b>27.5</b>	<b>27.5</b>	<b>28.2</b>	<b>29.1</b>
<b>8H</b>	<b>30.8</b>	<b>31.4</b>	<b>31.5</b>	<b>32.2</b>	<b>33.0</b>	<b>27.4</b>	<b>28.0</b>	<b>28.2</b>	<b>28.8</b>	<b>29.6</b>
<b>12H</b>	<b>32.3</b>	<b>32.8</b>	<b>33.0</b>	<b>33.6</b>	<b>34.5</b>	<b>28.0</b>	<b>28.5</b>	<b>28.7</b>	<b>29.3</b>	<b>30.1</b>
<b>12H 4H</b>	<b>27.4</b>	<b>28.2</b>	<b>28.1</b>	<b>28.9</b>	<b>29.7</b>	<b>25.8</b>	<b>26.6</b>	<b>26.5</b>	<b>27.3</b>	<b>28.1</b>
<b>6H</b>	<b>29.7</b>	<b>30.3</b>	<b>30.4</b>	<b>31.1</b>	<b>31.9</b>	<b>27.3</b>	<b>27.9</b>	<b>28.0</b>	<b>28.6</b>	<b>29.5</b>
<b>8H</b>	<b>31.1</b>	<b>31.6</b>	<b>31.8</b>	<b>32.4</b>	<b>33.3</b>	<b>28.1</b>	<b>28.6</b>	<b>28.8</b>	<b>29.4</b>	<b>30.2</b>
<b>Variations with the observer position at spacings:</b>										
<b>S = 1.0H</b>	<b>+ 0.1 / - 0.1</b>					<b>+ 0.1 / - 0.1</b>				
<b>1.5H</b>	<b>+ 0.2 / - 0.2</b>					<b>+ 0.2 / - 0.3</b>				
<b>2.0H</b>	<b>+ 0.2 / - 0.3</b>					<b>+ 0.2 / - 0.4</b>				

CIE Pub.117, 155.4 lm Total Lamp Luminous Flux Correct (8log(F/F0) = -6.5)

**C Range: 0 - 360DEG**  
**C Interval: 45.0DEG**  
**Test Speed: HIGH**  
**Temperature:25.3DEG**  
**Operators:ANDY**  
**Test Date:2021-04-26**

**γ Range: 0 - 180DEG**  
**γ Interval: 1.0DEG**  
**Test System:EVERFINE GO-2000A\_V1 SYSTEM V2.0.400**  
**Humidity:65.0%**  
**Test Distance:4.550m [K=1.0000]**  
**Remarks:**

**UTILIZATION FACTORS TABLE**

Test:U:24.010V I:0.4709A P:11.306W PF:1.0000 Freq:49.99Hz Lamp Flux:155.361x1 lm		
NAME: TPR-FL-ENCORE-RGB-R	TYPE:LED LIGHT	WEIGHT:0.5
SPEC.:	DIM.:	SERIAL No.:
MFR.: EVERFINE	SUR.:1.0*0.015	Shielding Angle:

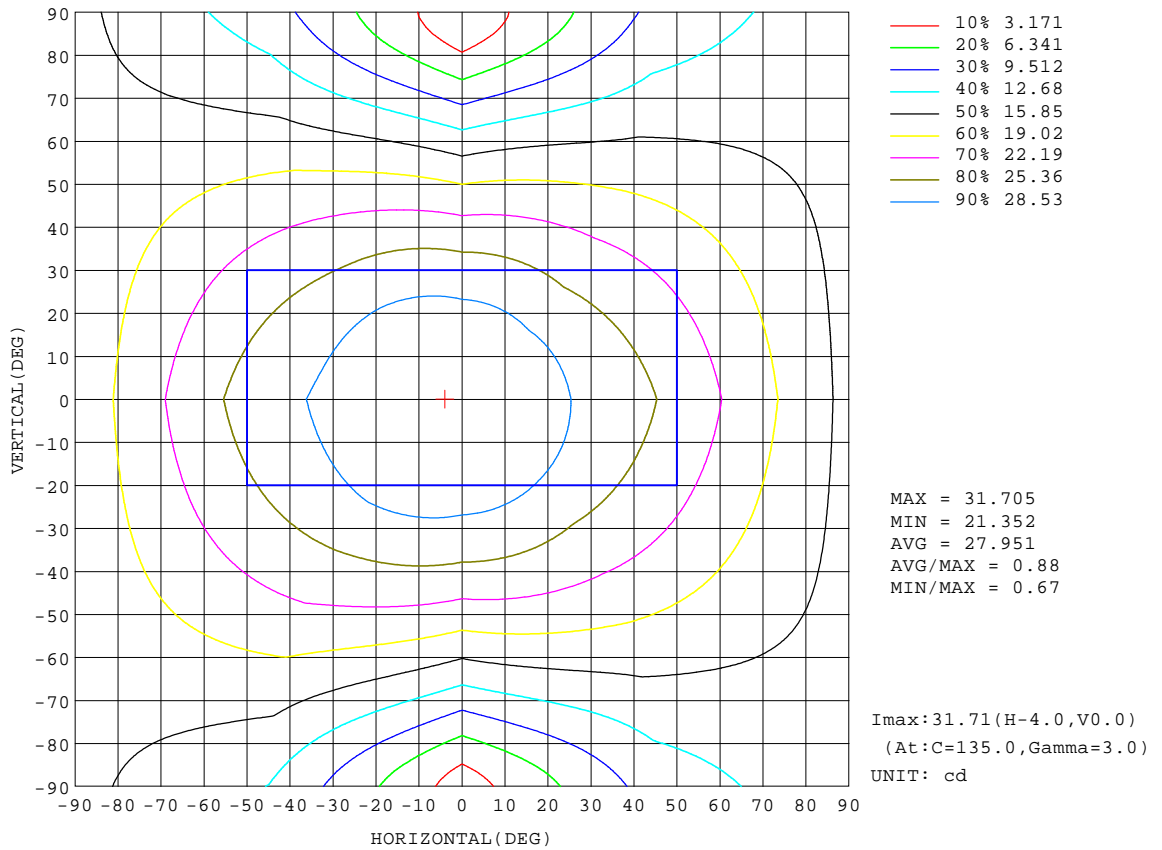
REFLECTANCE										
Ceiling	0.8	0.8	0.8	0.7	0.7	0.7	0.5	0.5	0.5	0
Walls	0.7	0.5	0.3	0.7	0.5	0.3	0.7	0.5	0.3	0
Working plane	0.2	0.2	0.2	0.2	0.2	0.2	0.2	0.2	0.2	0
ROOM INDEX	UTILIZATION FACTORS(PERCENT) $k(RI) \times RCR = 5$									
$k = 0.60$	47	34	27	45	34	27	43	33	26	19
0.80	56	43	35	54	42	34	51	40	33	25
1.00	63	50	42	61	49	41	58	50	40	31
1.25	70	57	49	68	56	48	63	53	46	36
1.50	75	63	54	73	61	53	68	58	51	40
2.00	83	71	63	80	69	61	74	65	58	46
2.50	87	77	69	84	74	67	77	69	63	50
3.00	91	82	74	87	79	72	80	73	68	54
4.00	96	88	81	92	85	78	84	78	73	58
5.00	99	92	86	95	88	83	87	82	77	61
ROOM INDEX	UF(total)									Direct
According to DIN EN 13032-2 2004			Suspended				SHRNOM = 1.25			

**C Range: 0 - 360DEG**  
**C Interval: 45.0DEG**  
**Test Speed: HIGH**  
**Temperature:25.3DEG**  
**Operators:ANDY**  
**Test Date:2021-04-26**

**$\gamma$  Range: 0 - 180DEG**  
 **$\gamma$  Interval: 1.0DEG**  
**Test System:EVERFINE GO-2000A\_V1 SYSTEM V2.0.400**  
**Humidity:65.0%**  
**Test Distance:4.550m [K=1.0000]**  
**Remarks:**

**ISOCANDELA DIAGRAM**

Test:U:24.010V I:0.4709A P:11.306W PF:1.0000 Freq:49.99Hz Lamp Flux:155.361x1 lm		
NAME: TPR-FL-ENCORE-RGB-R	TYPE:LED LIGHT	WEIGHT:0.5
SPEC.:	DIM.:	SERIAL No.:
MFR.: EVERFINE	SUR.:1.0*0.015	Shielding Angle:



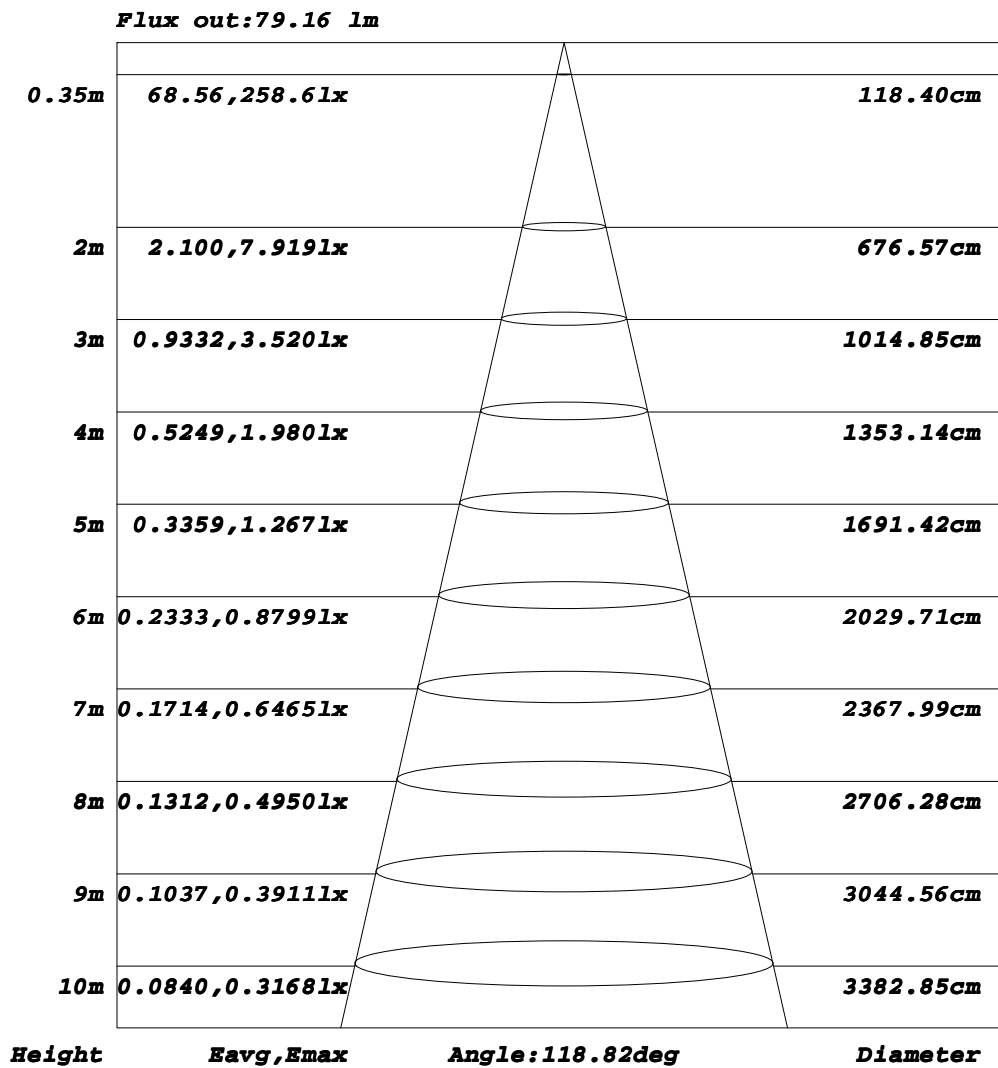
**C Range: 0 - 360DEG**  
**C Interval: 45.0DEG**  
**Test Speed: HIGH**  
**Temperature:25.3DEG**  
**Operators:ANDY**  
**Test Date:2021-04-26**

**γ Range: 0 - 180DEG**  
**γ Interval: 1.0DEG**  
**Test System:EVERFINE GO-2000A\_V1 SYSTEM V2.0.400**  
**Humidity:65.0%**  
**Test Distance:4.550m [K=1.0000]**  
**Remarks:**



**AAI Figure**

Test:U:24.010V I:0.4709A P:11.306W PF:1.0000 Freq:49.99Hz Lamp Flux:155.361x1 lm		
NAME: TPR-FL-ENCORE-RGB-R	TYPE:LED LIGHT	WEIGHT:0.5
SPEC.:	DIM.:	SERIAL No.:
MFR.: EVERFINE	SUR.:1.0*0.015	Shielding Angle:



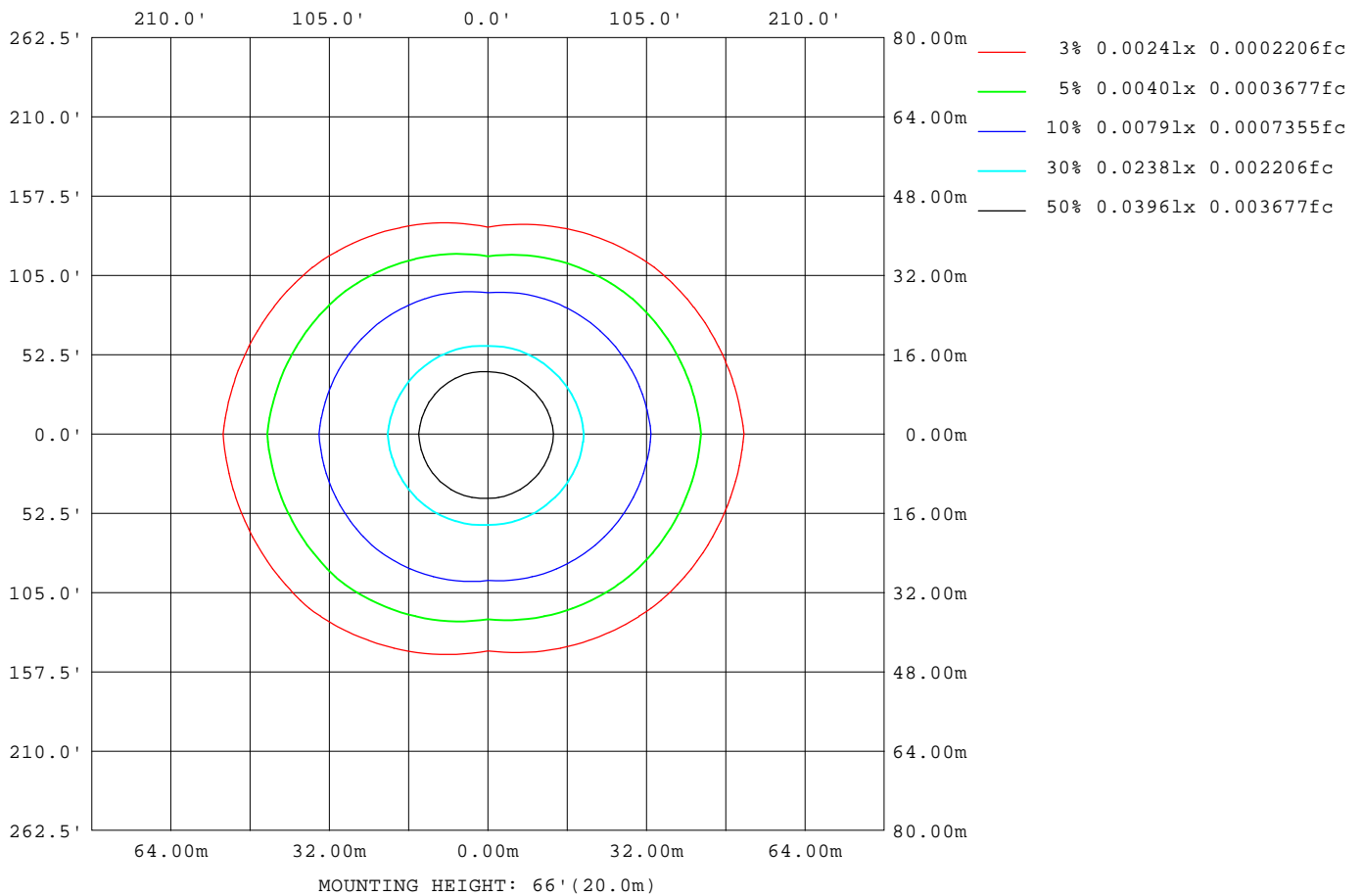
Note: The Curves indicate the illuminated area and the average illumination when the luminaire is at different distance.

**C Range: 0 - 360DEG**  
**C Interval: 45.0DEG**  
**Test Speed: HIGH**  
**Temperature: 25.3DEG**  
**Operators: ANDY**  
**Test Date: 2021-04-26**

**γ Range: 0 - 180DEG**  
**γ Interval: 1.0DEG**  
**Test System: EVERFINE GO-2000A\_V1 SYSTEM V2.0.400**  
**Humidity: 65.0%**  
**Test Distance: 4.550m [K=1.0000]**  
**Remarks:**

**ISOLUX DIAGRAM**

Test:U:24.010V I:0.4709A P:11.306W PF:1.0000 Freq:49.99Hz Lamp Flux:155.361x1 lm		
NAME: TPR-FL-ENCORE-RGB-R	TYPE:LED LIGHT	WEIGHT:0.5
SPEC.:	DIM.:	SERIAL No.:
MFR.: EVERFINE	SUR.:1.0*0.015	Shielding Angle:



**C Range: 0 - 360DEG**  
**C Interval: 45.0DEG**  
**Test Speed: HIGH**  
**Temperature:25.3DEG**  
**Operators:ANDY**  
**Test Date:2021-04-26**

**γ Range: 0 - 180DEG**  
**γ Interval: 1.0DEG**  
**Test System:EVERFINE GO-2000A\_V1 SYSTEM V2.0.400**  
**Humidity:65.0%**  
**Test Distance:4.550m [K=1.0000]**  
**Remarks:**

**LED Avg.L Report**

Test:U:24.010V I:0.4709A P:11.306W PF:1.0000 Freq:49.99Hz Lamp Flux:155.361x1 lm		
NAME: TPR-FL-ENCORE-RGB-R	TYPE:LED LIGHT	WEIGHT:0.5
SPEC.:	DIM.:	SERIAL No.:
MFR.: EVERFINE	SUR.:1.0*0.015	Shielding Angle:

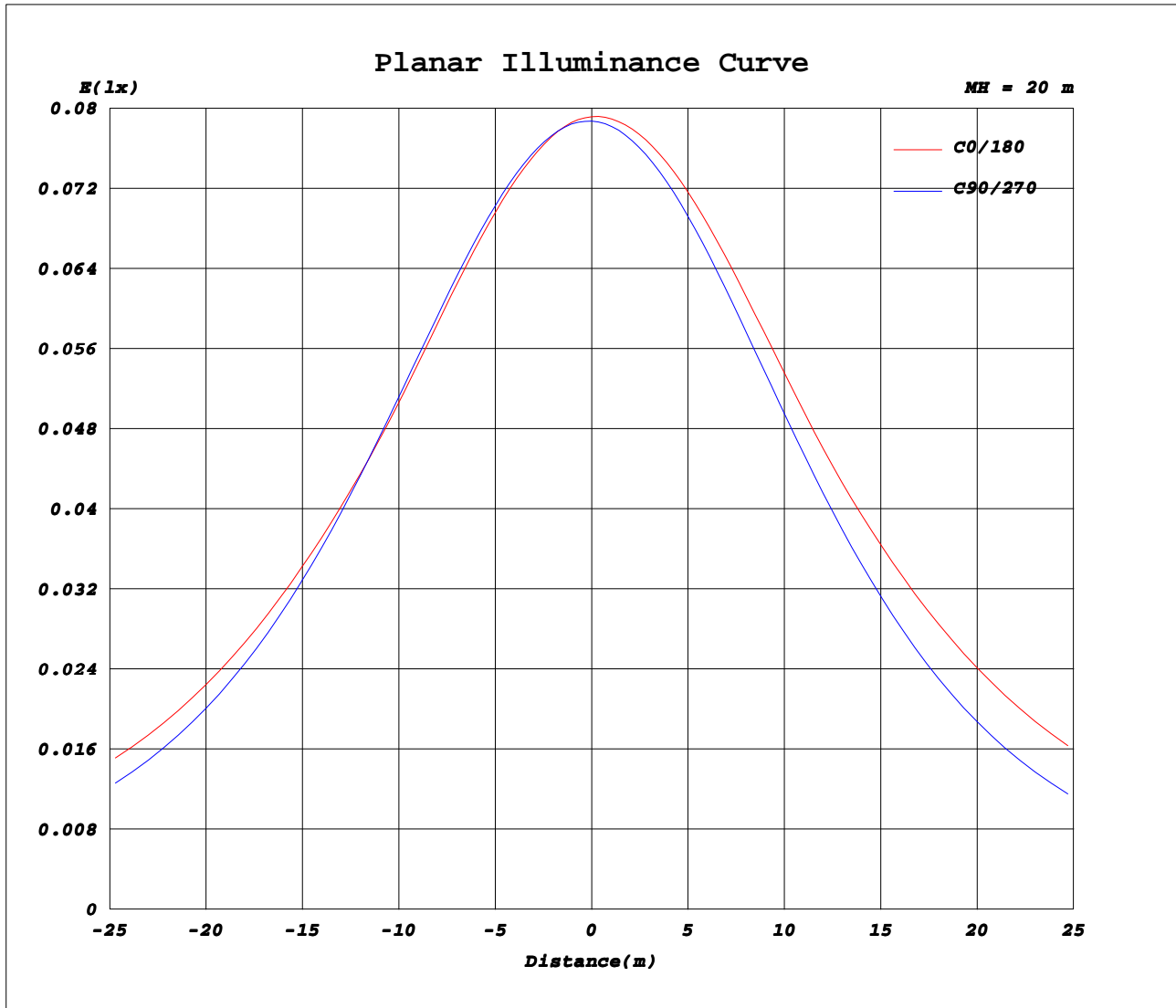
AvgL	cd/m2
L_0~180(65)av	3480
L_0~180(75)av	5041
L_0~180(85)av	13006
L_90~270(65)av	1961
L_90~270(75)av	1807
L_90~270(85)av	1779
L_45(65)av	2871
L_45(75)av	3906
L_45(85)av	9479

Standard: GB/T 29293-2012

**C Range: 0 - 360DEG**  
**C Interval: 45.0DEG**  
**Test Speed: HIGH**  
**Temperature:25.3DEG**  
**Operators:ANDY**  
**Test Date:2021-04-26**

**γ Range: 0 - 180DEG**  
**γ Interval: 1.0DEG**  
**Test System:EVERFINE GO-2000A\_V1 SYSTEM V2.0.400**  
**Humidity:65.0%**  
**Test Distance:4.550m [K=1.0000]**  
**Remarks:**

**Planar Illuminance Curve**



**C Range: 0 - 360DEG**  
**C Interval: 45.0DEG**  
**Test Speed: HIGH**  
**Temperature: 25.3DEG**  
**Operators: ANDY**  
**Test Date: 2021-04-26**

**γ Range: 0 - 180DEG**  
**γ Interval: 1.0DEG**  
**Test System: EVERFINE GO-2000A\_V1 SYSTEM V2.0.400**  
**Humidity: 65.0%**  
**Test Distance: 4.550m [K=1.0000]**  
**Remarks:**

**LUMINOUS DISTRIBUTION INTENSITY DATA**

Test:U:24.010V I:0.4709A P:11.306W PF:1.0000 Freq:49.99Hz Lamp Flux:155.361x1 lm		
NAME: TPR-FL-ENCORE-RGB-R	TYPE:LED LIGHT	WEIGHT:0.5
SPEC.:	DIM.:	SERIAL No.:
MFR.: EVERFINE	SUR.:1.0*0.015	Shielding Angle:

Table--1

UNIT: cd

C (DEG) \ γ (DEG)	0	45	90	135	180	225	270	315											
0	31.5	31.5	31.5	31.5	31.5	31.5	31.5	31.5											
5	31.3	31.4	31.5	31.6	31.6	31.5	31.3	31.2											
10	30.9	31.0	31.2	31.5	31.5	31.2	30.9	30.7											
15	30.2	30.4	30.7	31.2	31.2	30.8	30.2	30.0											
20	29.4	29.7	30.0	30.7	30.7	30.1	29.3	29.1											
25	28.5	28.7	29.0	30.0	30.1	29.2	28.1	28.0											
30	27.6	27.5	27.8	29.0	29.3	28.1	26.7	26.7											
35	26.9	26.2	26.3	27.9	28.6	26.8	25.1	25.4											
40	26.2	24.9	24.7	26.7	27.9	25.4	23.3	24.1											
45	25.3	23.6	22.8	25.4	27.2	24.0	21.3	22.8											
50	24.4	22.3	20.7	24.1	26.3	22.7	19.0	21.5											
55	23.3	20.8	18.5	22.8	25.4	21.2	16.6	20.0											
60	22.2	19.3	16.0	21.4	24.3	19.7	14.1	18.5											
65	21.0	17.8	13.5	19.9	23.1	18.1	11.4	17.0											
70	19.8	16.3	10.8	18.4	21.9	16.5	8.67	15.5											
75	18.6	14.8	8.07	16.9	20.6	15.0	5.96	14.0											
80	17.3	13.3	5.42	15.4	19.2	13.5	3.47	12.7											
85	16.1	12.0	3.09	14.0	17.9	12.1	1.56	11.4											
90	14.9	10.8	1.68	12.7	16.6	10.9	0.88	10.4											
95	13.8	9.85	1.48	11.5	15.3	9.75	0.84	9.40											
100	12.7	8.44	1.49	9.56	13.5	7.82	0.77	7.41											
105	10.9	6.85	1.52	8.28	11.9	6.10	0.71	5.71											
110	9.92	5.57	1.36	6.32	10.9	5.20	0.65	5.21											
115	8.50	5.06	1.20	5.96	9.88	5.11	0.55	3.62											
120	8.12	4.69	1.03	6.13	8.92	5.34	0.24	4.48											
125	7.35	4.55	0.26	5.86	8.05	4.97	0.25	4.14											
130	6.53	4.20	0.26	5.21	7.26	4.16	0.26	3.42											
135	6.01	3.37	0.26	4.40	6.31	3.80	0.26	2.87											
140	4.49	2.76	0.27	4.04	5.23	3.56	0.27	2.49											
145	3.08	2.54	0.27	3.73	4.50	3.30	0.27	2.42											
150	3.58	2.32	0.27	3.44	4.06	3.06	0.28	2.11											
155	3.32	1.96	0.28	3.13	3.62	2.76	0.28	1.71											
160	2.88	1.55	0.28	2.78	3.12	2.48	0.29	1.35											
165	2.33	1.27	0.29	2.15	2.62	1.87	0.30	1.05											
170	1.15	0.97	0.30	1.73	1.82	1.12	0.30	0.42											
175	0.33	0.30	0.30	0.32	0.28	0.31	0.30	0.32											
180	0.28	0.30	0.30	0.31	0.28	0.30	0.30	0.32											

**C Range: 0 - 360DEG**  
**C Interval: 45.0DEG**  
**Test Speed: HIGH**  
**Temperature:25.3DEG**  
**Operators:ANDY**  
**Test Date:2021-04-26**

**γ Range: 0 - 180DEG**  
**γ Interval: 1.0DEG**  
**Test System:EVERFINE GO-2000A\_V1 SYSTEM V2.0.400**  
**Humidity:65.0%**  
**Test Distance:4.550m [K=1.0000]**  
**Remarks:**