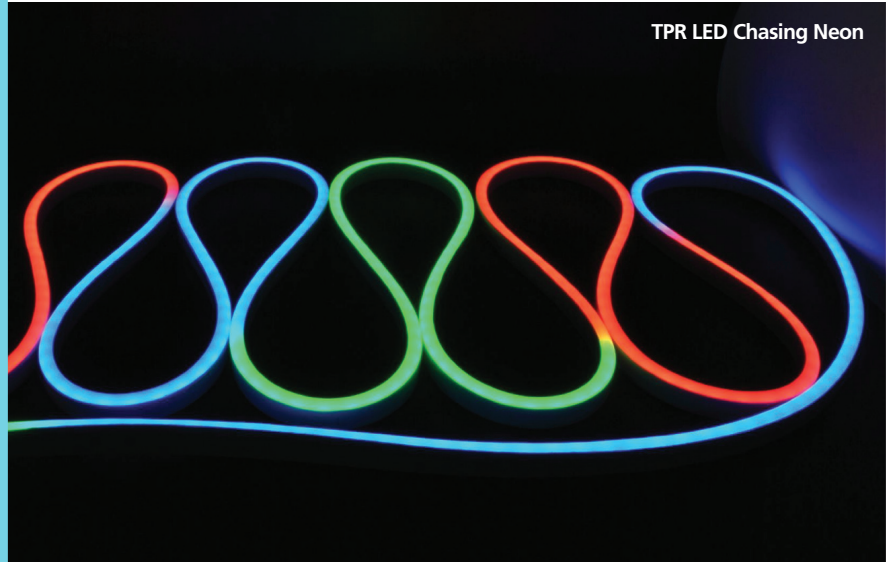


TPR LED CHASING NEON – ROUND TOP & FLAT TOP

IP67

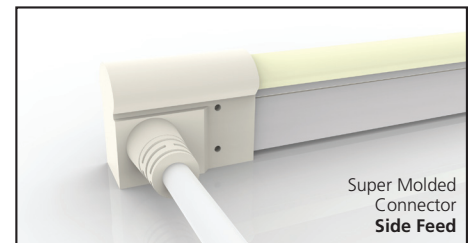
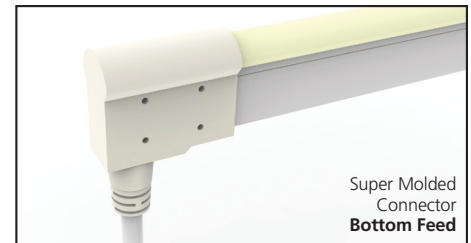
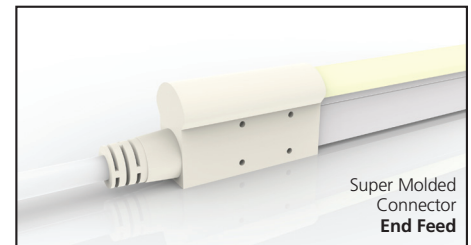
Description:

The TPR LED Chasing Neon is a flexible Neon replacement for Architectural and Entertainment venues. It is IP67 rated for extreme weather and uses DMX to SPI technology for Pixelation every 5". Great for outlining buildings and creating curved lines of light, this product also has UV inhibitors. It also cuts to length every 5" for custom length runs. This product is available in RGB and RGB-W (both 2700K and 4000K). Available in Horizontal Bend (shown) and Vertical Bend.



Specifications: *

Construction:	PVC Ivory White base
Power:	4.6 W/ft
Operating Voltage:	24VDC
Operating Temp:	-4F to 104F (-20C to 40C)
Dimensions:	0.48" W" x 0.82"H
Lamp Life:	50,000hr (70% Lumen Maintenance)
Max Run Length:	32' Single Feed, 64' Double Feed with Injection Molded (IP67) Connectors for RGB 16' Single Feed with Injection Molded (IP67) Connectors for RGBW
Pixelation:	5" (3 Chnl RGB or 4 Chnl RGBW)
Control:	TPR-UE7 or Madrix



Certifications:



Ordering Logic:

MODEL	COLORS	TYPE	LENGTH (in inches)	FEED
TPR-FL-NEON-CHS	RGB RGBW (4000K) RGBWW (2700K)	R (Round Top) F (Flat Top)		E (End) B (Bottom) S (Side)

* Specifications subject to change without notice.