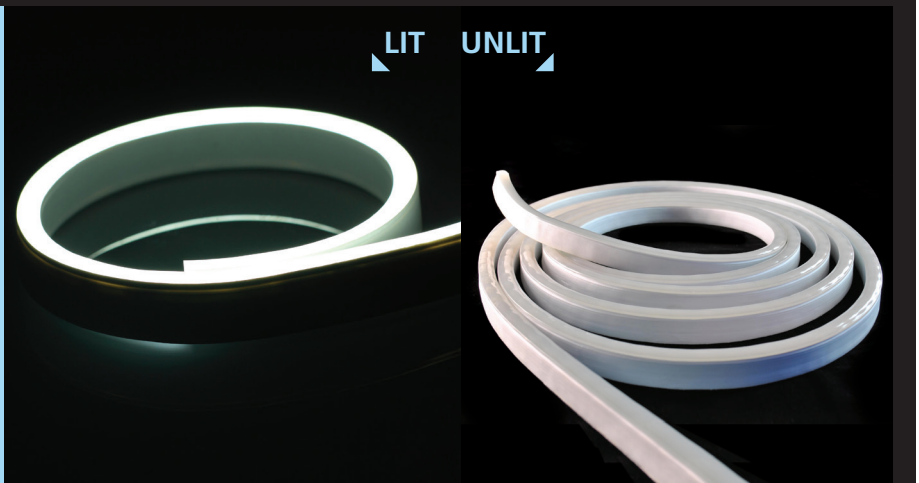


TPR WESTFLEX® SINGLE COLOR FLAT-TOP LED NEON IP68

Description:

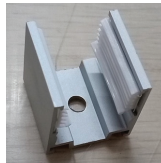
The **TPR Westflex® Single Color Flat-top LED Neon** is a flexible Neon replacement product for use in Architectural and Entertainment venues. It comes in several color temperatures of white and solid color options. It is IP68 rated for extreme weather and has an extremely tight bend radius (horizontal bend). This product is great for outlining buildings and creating curved lines of light.



Specifications:

- Power Consumption:** Red and Amber: 2.5Watts per foot
White, Green, Blue: 3.7Watts per foot
- Operating Voltage:** 24VDC
- Operating Temp:** -4F to 104F (-20C to 40C)
- Dimensions:** 0.46"W x 0.82"H
- Lamp Life:** 50,000 Hours 70% Lumen Maintenance
- Min Bend Radius:** 4.75"
- Min Segmentation:** RED and Amber: 125mm (4.9212")
White, Green, Blue: 83.33mm (3.2807")
- Max Run Lengths:** 32' Single Feed, 64' Double Feed
- Lumens (by color):** **RED:** 42 lumens per foot
GREEN: 112 lumens per foot
BLUE: 25 lumens per foot
Amber: 42 lumens per foot
4000K: 143 lumens per foot

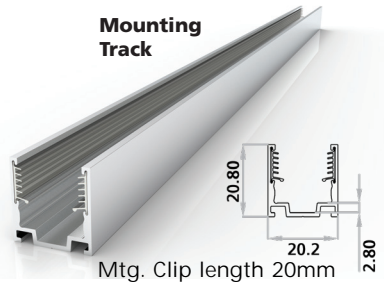
Mounting Clip



Certifications:



Mounting Track



Ordering Logic:

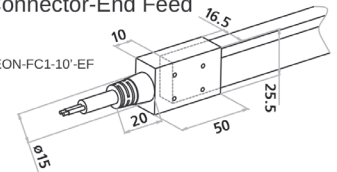
MODEL	COLOR	TOP	FEED TYPE
TPR-FL-NEON	Red or 2200K	F (flat-top)	EF (end feed)
	Green 2700K		BF (bottom feed)
	Blue 3000K		SF-R (side feed, right side)
	Amber 3500K		SF-L (side feed, left side)
	4000K		
	5700K		

TPR Westflex® Flat-top Neon End Dimensions

Dual Injection-molded Front Connector-End Feed



TPR-FL-NEON-FC1-10'-EF

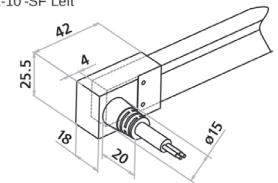


Dimensions in mm

Dual Injection-molded Front Connector-Side Feed



TPR-FL-NEON-FC1-10'-SF Left

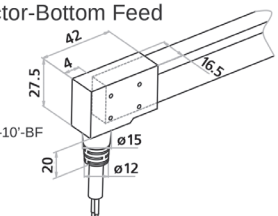


TPR-FL-NEON-FC1-10'-SF Right

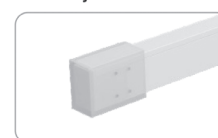
Dual Injection-molded Front Connector-Bottom Feed



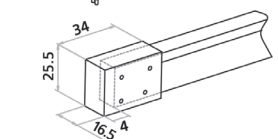
TPR-FL-NEON-FC1-10'-BF



Dual Injection-molded End Cap



TPR-FL-NEON-EC



- Note: 1. Unless otherwise stated, the tolerance of the connector is $\pm 0.5\text{mm}$;
2. To avoid damage from the excessive force on cable joint, please keep at least 60mm of cable ahead in the natural state.
3. All Front Connectors will be made with a 10' tail.