

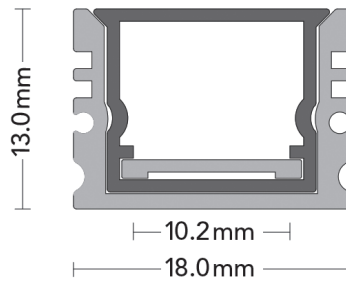
TPR WEATHERPROOF SQUARE EXTRUSION

KA5

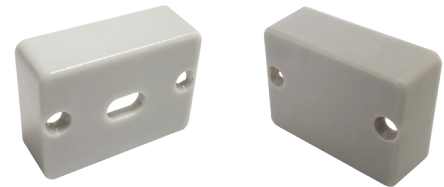
IP65

Description:

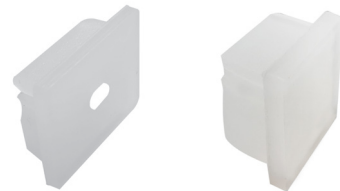
The **TPR IP65 Square Extrusion** is uniquely designed for exterior use. This product is comprised of several components including an aluminum housing, polycarbonate lens and a silicone gasket with a polycarbonate end cap. This product is compatible with our Covemax™ Seamless Single Color Tape Light (tape light must be ordered separately). This product is supplied in 2 meter lengths and is supplied with two gaskets and two end caps per section. Mounting clips are ordered separately.



End Caps



Gaskets



Specifications:*

Construction: Aluminum channel, Polycarbonate lens
Compatibility: Covemax™ Seamless Single Color Tape Light
Operating Temp: -4F to 104F (-20C to 40C)
Dimensions: 13mm H x 18mm W x 2 meters long

Accessories:

Mounting Clip
TPR-EXT-KA5-MC



Ordering Logic:

MODEL	LENS	LENGTH (in inches)
-------	------	--------------------

TPR-EXT-KA5 - M (Milk) - Ex: 78.74

Example: TPR-EXT-KA5-M-78.74

*Specifications subject to change without notice.