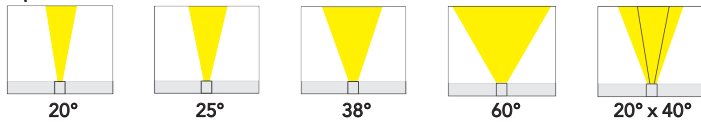
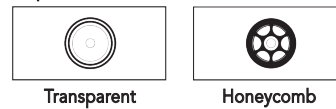


Ansi C78.377	SDCM for LED	One Bin	Dimmable	UL
Ansi C78.377	SDCM<3	One Bin	Dimmable	UL
Ambient Temp. 55°C / -40°C	LM-80	IK08	UV Resistant	Saltwater Resistant
Ambient Temp	LM-80	IK08	UV Resistant	Saltwater Resistant
Flame Resistant	Solvents Resistant	CE	RoHS	3 year warranty
Flame Resistant	Solvents Resistant	CE	RoHS	Warranty

Optional LENS Distribution







Optional Cover:

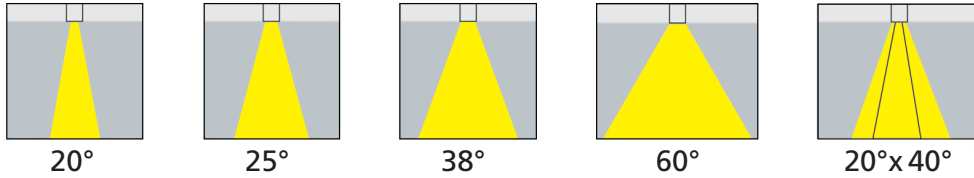


Technical Parameters

Electrical	
Input Voltage	24V DC
Power Consumption	23W/m
Physical	
LED Count	24 LEDs/m (7 per ft.)
Cutting Unit	6 LEDs (9.8")
Cutting Unit Length	250mm (9.8")
Mini. Curvature Radius:	250mm (9.8")
Output	
LED Light 25°	Epistar SMD LED 3535
Color	RGBW (3000K/4000K/6000K)
CRI	80
Max Length	5M (16ft.)
Optional Lens	20°, 25°, 38°, 60°, 20° x 40°
Lumen Maintenance	70,000 Hours L70 @ 25°C 50,000 Hours L70 @ 50°C
Temperature Ranges	
Installation	0°C to 50°C
Operating	-40°C to 55°C
Dependability	
Warranty	3 Years Warranty
IP Rating	IP68

Emitting Color	Lumen Output
 Red	88 lm/m
 Green	248 lm/m
 Blue	138 lm/m
 3000K	188 lm/m

Beam Spreads



Ordering Code

TPR-KFLWG - RGBW - - 25 - A

Product No. _____

CCT White _____
2700K, 3000K, 3500K, 4000K, 5000K

Quantity of Units (increments of six units) _____

Lens Distribution _____
20°, 25°, 38°, 60°, 20°x40°

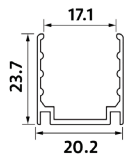
Cover Styles _____
A=Standard B=Honeycomb C= Anti-Glare only available with 10° x 15° lens

Mounting Options

Aluminum Mounting Channel

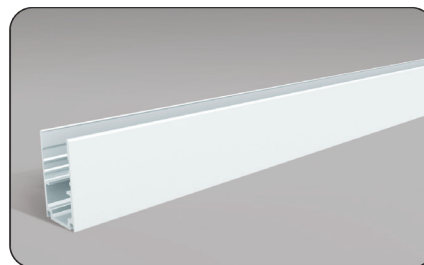


TPR-KFLWG-MT

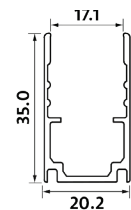


Dimensions
Unit: mm

Aluminum Mounting Channel
with Wire Raceway



TPR-KFLWG-MTWR

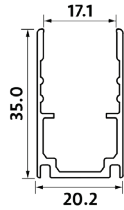
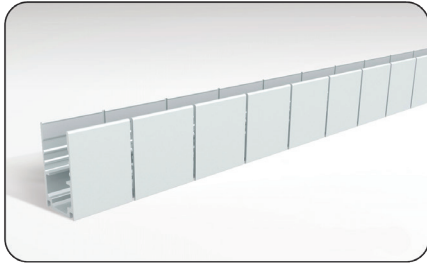


Dimensions
Unit: mm

Mounting Options continued on next page.

Mounting Options (continued)

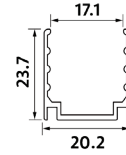
Flexible Aluminum Mounting Channel



Dimensions
Unit: mm

TPR-KFLWG-MTF

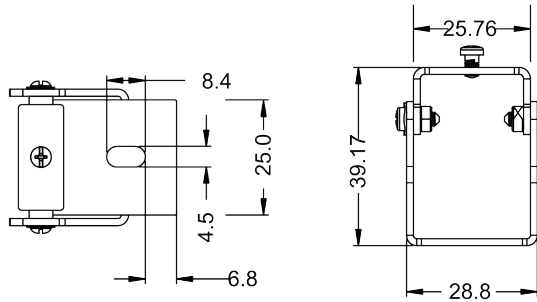
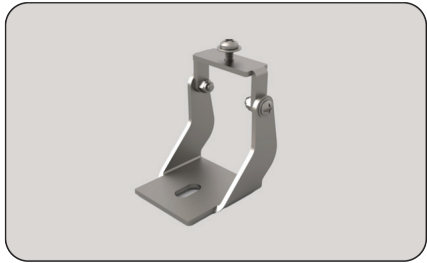
Mounting Clip



Dimensions
Unit: mm

TPR-KFLWG-MC

Angle Adjustable Bracket

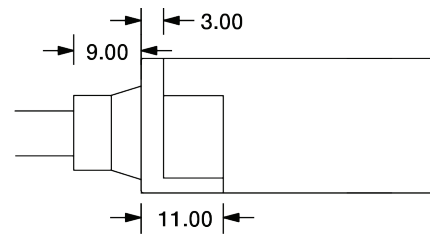
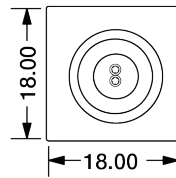
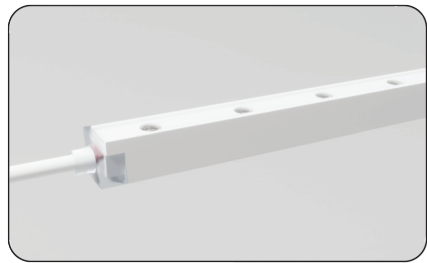


Dimensions
Unit: mm

TPR-KFLWG-AB

Feed Options: Molded Injection Connectors (IP68 Factory Assembly Only)

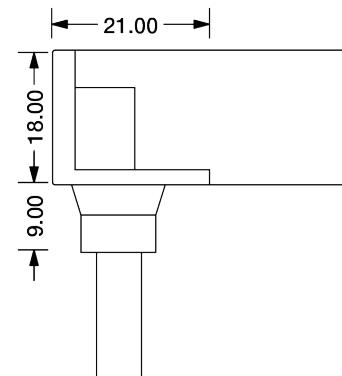
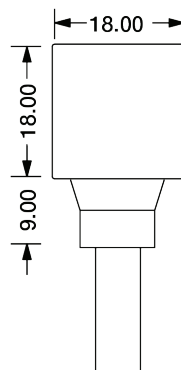
End Entry Connector



Dimensions
Unit: mm

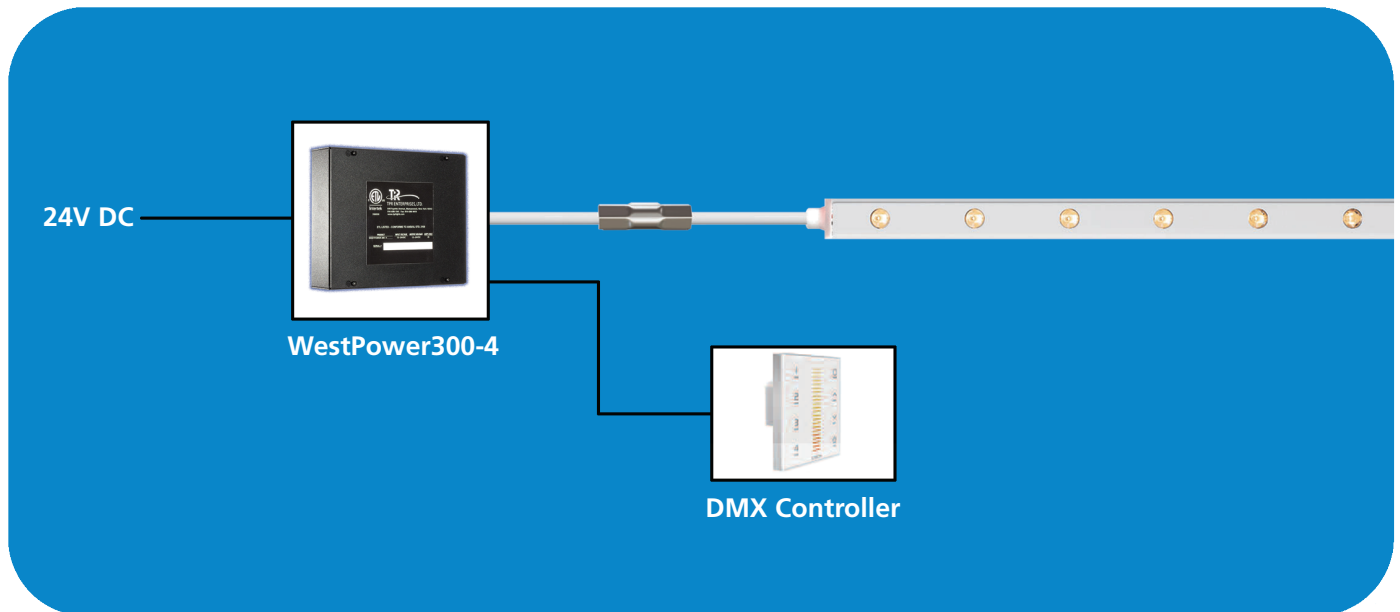
TPR-KFLWG-EC

Bottom Entry Connector



TPR-KFLWG-BC

Typical Wiring and Control Options



Accessories

TPR-KFLWG-MC – Mounting Clip

TPR-KFLWG-AB – Adjustable Bracket

TPR-KFLWG-MT – Aluminum Mounting Channel,
1 meter

TPR-KFLWG-MTWR – Aluminum Mounting Channel
with Wire Raceway, 1 meter

TPR-KFLWG-MTF – Flexible Mounting Channel