



TPR ENTERPRISES, LTD.®

MirageFlex™

Non-Waterproof Models

Instruction Manual

You must read and understand the following. If you have questions call (914) 698-1141 before installing. POLARITY IS CRITICAL.

- **Test each sheet individually** before you install and permanently connect to power supply. Each sheet has been tested and burnt in prior to shipping. However, shipping damage, while unlikely is possible.
- **Only connect to properly sized and correct voltage power supply** as supplied with system. **MirageFlex™ Panels are 24VDC only.**
- **System must be installed by a licensed electrical contractor** and installed to meet local electrical codes. This is the customers responsibility.
- **Voltage drop is always a concern when working with low voltage DC wiring.** Please check the voltage drop calculator on our website www.tprlights.com if you have extended run lengths. Longer runs and improper sized wire will cause uneven brightness and may cause failure.
- **Do not apply weight to connector blocks.** Nylon standoffs are available as an accessory for applications where there will be a direct overlay to the MirageFlex™ Panel. Nylon standoffs must only be installed in marked locations.
- **Disconnect power before any cutting or modification.** Panel must be cut on cut lines only. Cut edge must not come in contact with conductive materials. Cut edges that may come into contact with conductive materials must be insulated/coated with silicone.
- **MirageFlex™ panels have specific areas where holes can be made in the sheet.** This is the only area where holes can be made without damaging the panel. The area is marked on the sheet. Screw holes must be less than 1/8" and screw head size must not exceed 1/4". Pan head screw works best. Do not over tighten. If panel starts to deform, it is too tight.



- **3M adhesive backing may not adhere properly in low temperatures or high humidity.** Operating Temp -20°F ~ 60°F. Humidity range is 40%-70%.
- **MirageFlex™ bending radius** is approximately 2".
- **Store MirageFlex™ Panels in original packaging** in cool dry and flat location until ready to install.
- There is a possibility, depending on your installation and cut pattern, **you may have to solder leads onto the panels to join panels or power them.** We strongly recommend using the connectors, however if this step is necessary, it must be connected by a technician/electrician who has soldering experience. Severe damage can occur if not properly done and panel failure will occur. See maximum feed through. ***For waterproof panels, see waterproof instructions.***
- **Polarity is extremely important.** Incorrect polarity will cause failure.
- **Maximum number of panels that can be connected together:**

SINGLE COLOR

2 watt	Using one jumper 30 panels.	Using two jumpers consult factory.
3.7 watt	Using one jumper 15 panels.	Using two jumpers consult factory.
7.5 watt	Using one jumper 10 panels.	Using two jumpers consult factory.
10 watt	Using one jumper 10 panels.	Using two jumpers consult factory.

TUNABLE WHITE

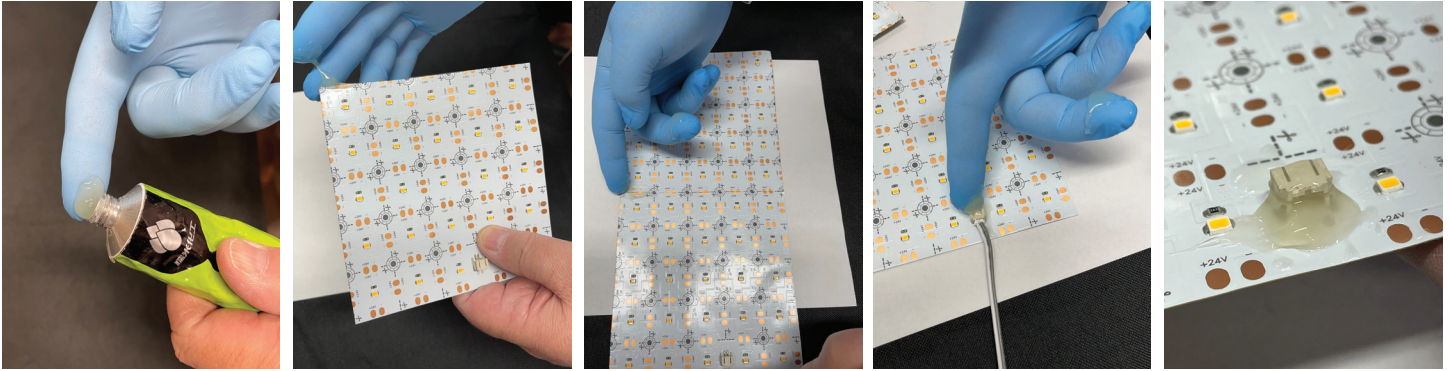
11 watt	Using one jumper 10 panels.	Using two jumpers consult factory.
16 watt	Using one jumper 8 panels.	Using two jumpers consult factory.

RGB, RGBW, RGBWW

25 watt	Using one jumper 10 panels.
----------------	-----------------------------

- This product is IP20 – **INDOOR USE ONLY.**
- **Panel is not designed for continuous flexing.** This will cause failure.
- **Once installed, removal will cause panel failure.**

***Test all MirageFlex™ Sheets prior to mounting and connecting together.**



CUTTING

Cut only on cutting lines. Deviating from the cutting lines will cause product failure. Use scissors, utility knife or X-Acto knife.

FOLDING

Fold only on lines marked on the sheet, same as for cutting. **Folding on any other area will cause product failure.**

POWER INPUT CABLE

Connect at a central point in your display for the most even illumination and power management.

Use only Class 2 power supply with an output of 24VDC.

If it is necessary to extend the power input cable, please see the voltage loss calculator on our website www.tprlights.com.

JUMPERS

These may be used to connect multiple sheets. – Please see max connection chart. Connecting more than the recommended number of Panels will cause product failure.

Multiple Panels connected together must be connected to the same power supply only.

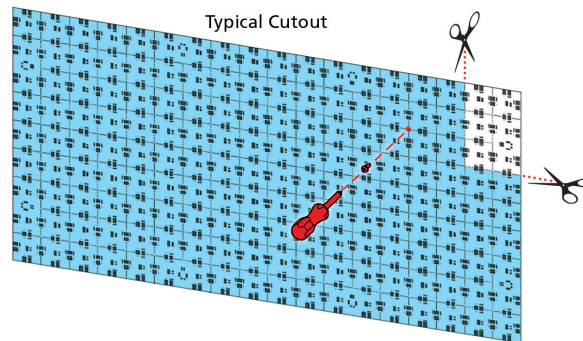
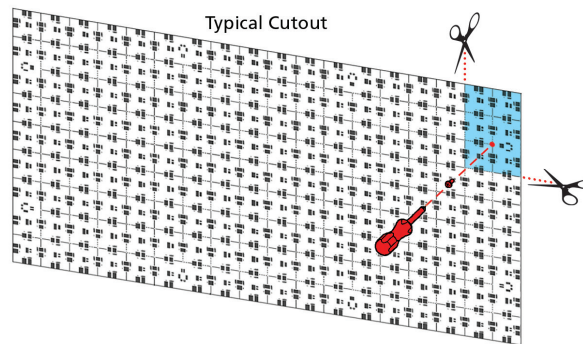
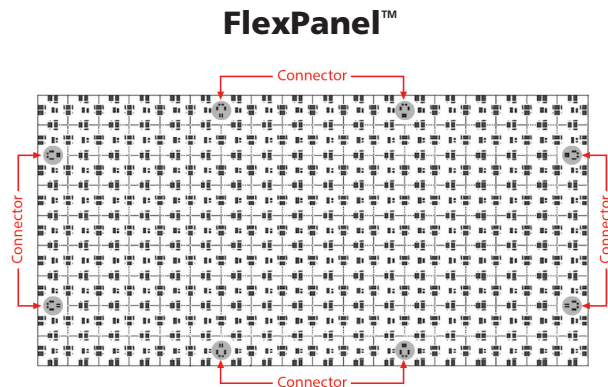
DIMMING

MirageFlex™ Panels are dimmable using our **WestPower300-4™** Dimmers (consult factory).

MOUNTING

Before removing the protective layer of the double stick backing. Lay out your Panels to be sure they fit properly in designated location.

Screws may only be used in designated areas. Screws cannot be used in another area. **This will cause product failure.** Screw holes must be less than 1/8" and screw head size must not exceed 1/4". Pan head screw works best. Do not use any other type of screw. Be sure not to overtighten and warp or damage the Panel. If using an electric drill/screw gun, it is imperative that the torque be set properly.



All panels are single LED cut. Follow cut marks.



WET LOCATION INSTRUCTIONS

READ THIS FIRST – PLEASE SEE WET LOCATION INSTRUCTIONS FOR COMPLETE DETAILS

You must order the IP54 MirageFlex™ Panel. The IP20 model is not to be used in wet location.

IP54 rating means the following:

Protected against water splashed from all directions. This does not mean the product is waterproof. Moisture should not condensate and panel should not be exposed to water continuously. If these conditions exist, they will cause product failure. It's best to encase the product when it is used in this type of environment. **Failure to do so will cause corrosion and ultimate failure.**

Cut edges must be protected against moisture by sealing with silicone.

All cut areas must be completely covered or product failure will occur.