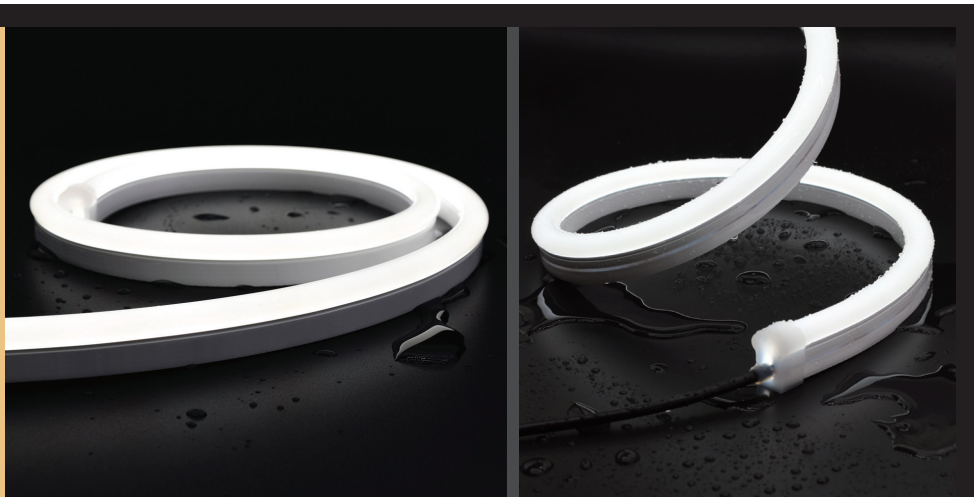


TPR ENCORE ROUND-TOP LED NEON

IP67

Description:

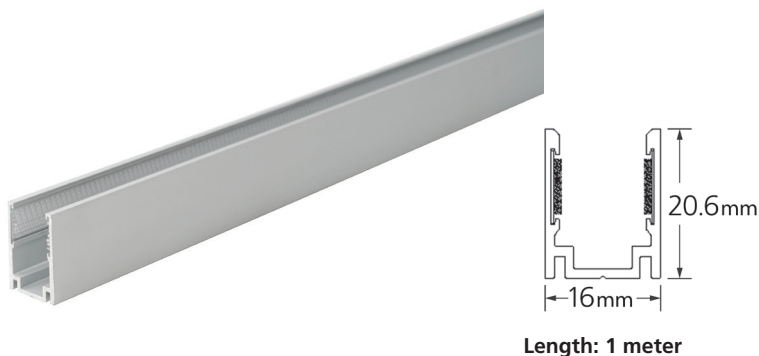
The **TPR Encore LED Neon** is a flexible Neon replacement product for use in Architectural and Entertainment venues. It's available in several color temperatures of white, solid colors, RGB, and RGBW. It's IP67 rated, has UV protection, and allows for a tight bend radius. Great for outlining buildings and creating curved lines of light.



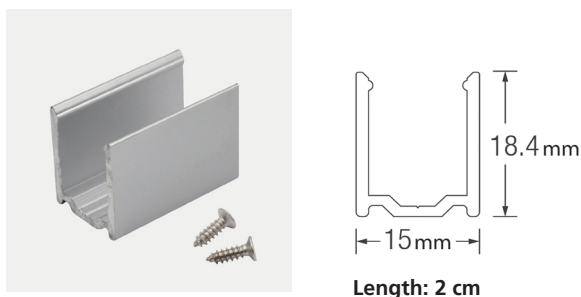
Specifications:

Construction:	Silicone
Power:	4.6W/FT (Single color), 4.6W/FT (RGB) 4.6W/FT (RGBW)
Operating Voltage:	24VDC
Operating Temp:	-4F to 104F (-20C to 40C)
Min Bend Radius:	5.91"
Lamp Life:	50,000hr (70% Lumen Maintenance)
Max Run Length:	33' Single Fed (Single Color only)
Max Run Length:	32' Single Fed (RGB & RGBW only)
Connectors:	Molded (IP67)
Cut Length:	2" (50mm) White 2.5" (62.5mm) RGB & RGBW

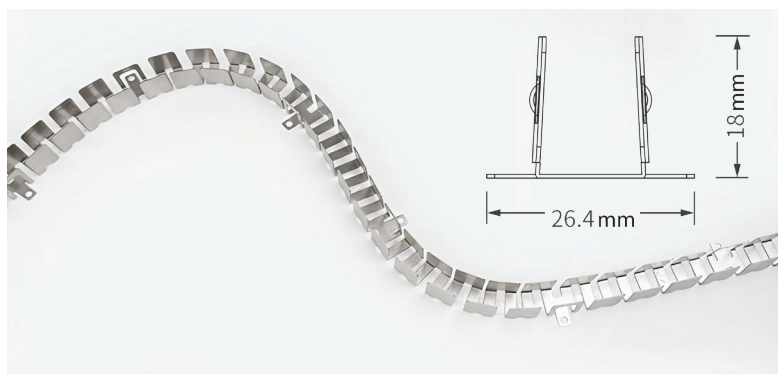
Aluminum Mounting Track (Rigid)



Aluminum Mounting Clip



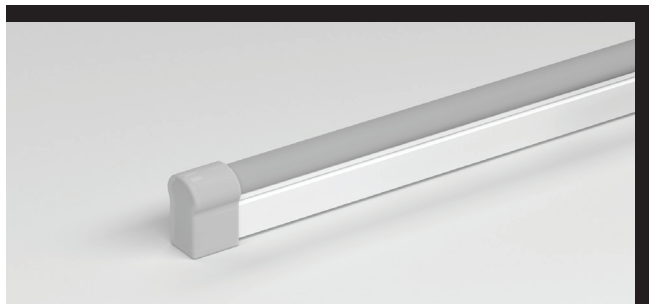
Aluminum Mounting Track (Flexible)



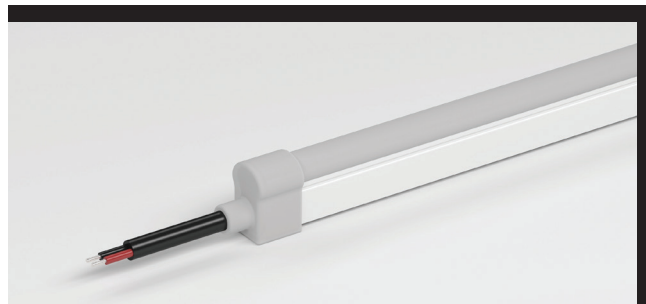
TPR ENCORE ROUND-TOP LED NEON CONTINUED

IP67

End Cap



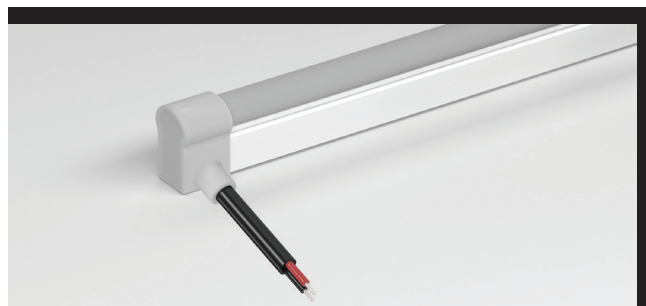
EF – End Feed



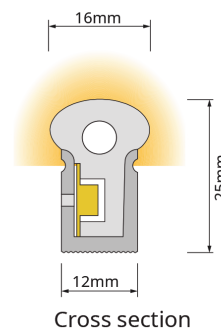
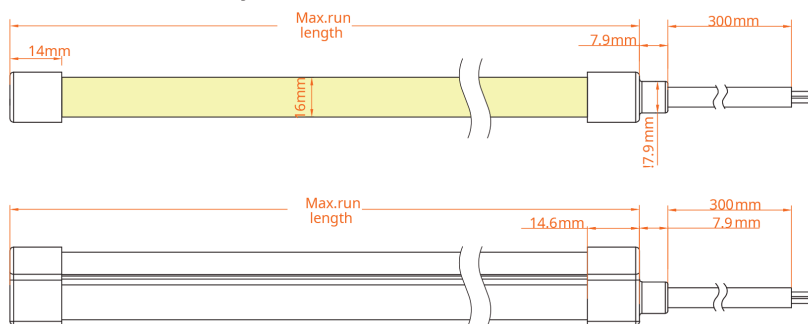
BF – Bottom Feed



SF – (Right or Left) Side Feed



Dimensions



Cross section

Certifications:



Ordering Logic:

MODEL	COLOR	OR	COLOR TEMP	FEED TYPE
TPR-FL-ENCORE – S – R –	W (Choose CT)		2100K	EF (end feed)
	R (Red)		2400K	BF (bottom feed)
	G (Green)		2700K	SF-L/R (side feed left or right)
	B (Blue)		3000K	
	P (Pink)		3500K	
	RGB		4000K	
	RGBW		5000K	
			6500K	