

TPR ILLUZION™ DIRECT VIEW RGBW LINEAR V2

IP66

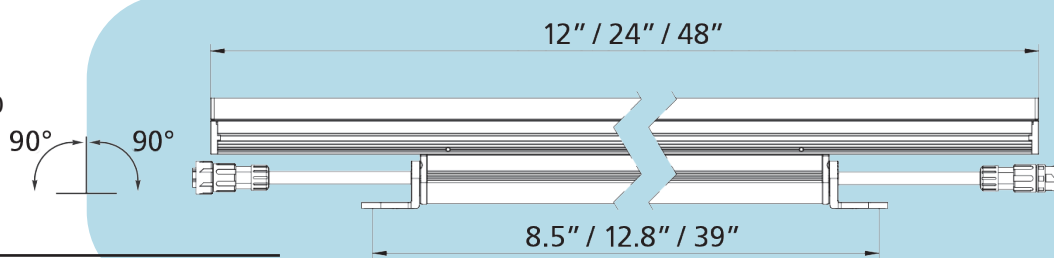
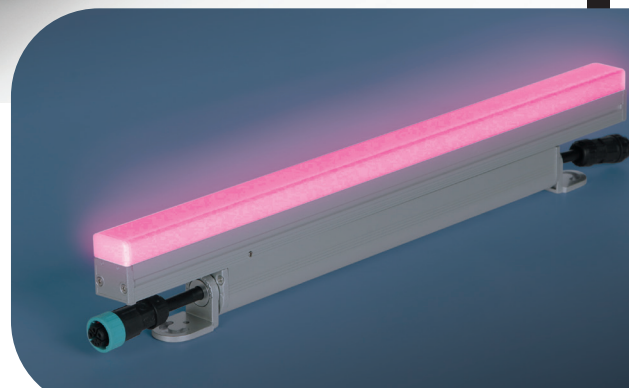
Description:

The **TPR RGBW Illuzion™ Direct View Linear** fixture is a low profile extruded Aluminum fixture for Architectural and Entertainment markets. Input voltage is 120-277VAC. This fixture is also available in a Pixel Control model and is supplied with swivel foot mount brackets for 180 degree aiming. Available in 1', 2' and 4' lengths.



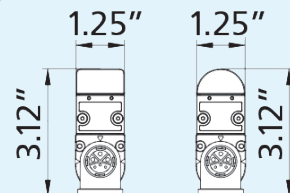
Specifications:

Construction:	Aluminum Housing, Polycarbonate Lens
Lumen Output:	4' fixture (RGBW) All on 635 lumens
Beam Angle:	120°
Operating Temp:	-4F to 104F (-20C to 40C)
Dimensions:	1.25" W x 3.12" H (on feet) x 12", 24" or 48" L
Power:	28 Watts Max. (4')
Max Run:	80' at 120 Volt
LEDs:	Cree XPG
Voltage:	120-277VAC
Rating:	IP66
Control:	DMX/RDM, or 0-10
Pixel:	4" = 4 channels
Certifications:	ETL, CE, ROHS



Accessories:

Part #	Jumper Power + Data
ILLV2DVJUMP1.5	1.5Ft. Cable IP65-IP65
ILLV2DVJUMP3	3Ft. Cable IP65-IP65
ILLV2DVJUMP6	6Ft. Cable IP65-IP65
ILLV2DVJUMP10	10Ft. Cable IP65-IP65
Part #	Power + Data Feed Cable
ILLV2DVPWR10	10Ft. Cable IP65-Bare Ends



Ordering Logic:

MODEL	LENGTH (in feet)	COLOR TEMP	OPTIONS	CONTROL
TPR-ILL-V2-DV	1' 2' 4'	RGBW 2700K RGBW 3000K RGBW 4000K	RT (Round Top) FT (Flat Top)	DMX/RDM 0-10 DMX/RDM/PA