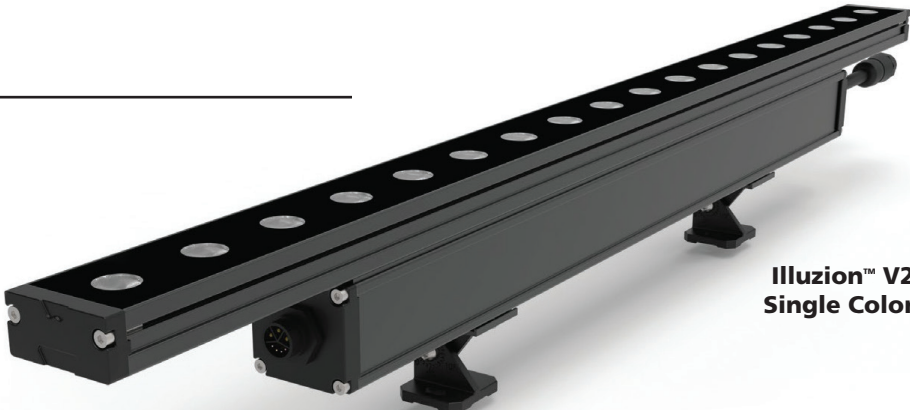


Illuzion™ V2 White Light Instruction Manual

The **Illuzion™ V2 Single Color** is a high power linear flood light for use in Architectural and Entertainment markets. Available in 1ft, 2ft and 4ft lengths. The available beam angles are 15, 30, 45, 15 x 40 and 15 x 55 degree. The Illuzion™ V2 fixtures operate from a DMX512 protocol, or 0–10 control.

Specifications:

- Rotary Angle: 150 degrees
- Input Voltage: 100/277VAC
- Protection Rating: IP66
- Operating Temp: -4F to 104F
- Modes: 0–10 control
DMX/RDM 3 channel



Illuzion™ V2 Single Color

DMX/RDM Operation

Addressing:



In DMX/RDM operation with a DMX/RDM signal connected on digital readout, push button A to select digit 1, then push button B to address channel number (100's). When you select the desired number from 0–9, pause until it stops flashing. Push button A again to select digit 2, then push button B to address channel number (10's). When you select the desired number from 0–9, pause until it stops flashing. Push button A again to select digit 3, then push button B to address channel number (1's). When you select the desired number from 0–9, pause until it stops flashing.



Illuzion™ V2 Direct View Single Color

You have now completed selecting your desired DMX address.

For 0–10 operation, ignore the above DMX/RDM instructions.

Specifications subject to change without notification.